

# Spring Newsletter

[Campaign Preview](#)

[HTML Source](#)

[Plain-Text Email](#)

[Details](#)

SCENE BY RHYS ART GALLERY | E-Newsletter #3

[View this email in your browser](#)



**Spring is here...and with it, Music Season will soon be upon us in New Orleans!**

**From the Scene by Rhys Art Gals: Emilie Rhys and Esther Rose...at 708 Toulouse (Courtyard Entrance)**



The gallery is now traversing its second year in the French Quarter and we look

The gallery is now traversing its second year in the French Quarter and we look forward to welcoming you when next you visit! Whether local or tourist, longtime art collector or neophyte, we are grateful to count you among our friends and supporters, particularly those of you who also are music fans.

Since the last full newsletter in August, special events have kept us hopping, more about those later. First off, we would like to introduce gallery intern Sofia Riggio and new gallery assistant Hannah Wycoff.



Sofia (at left sporting the colorful headress) is an opera singer in-training (a sophomore at Loyola University here in New Orleans) who has been with us since a year ago helping with music happenings in the courtyard, and providing general assistance. Hannah, at right manning our check-out table, joined the team a few months ago. In addition to gallery sitting, she will focus on dedicated professional scanning of the prolific output of our resident artist.

---

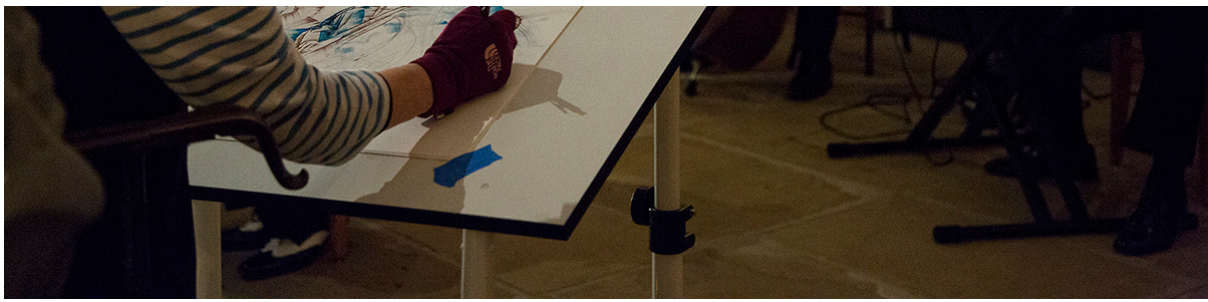
\*NOTE: We hope you will enjoy reading about our progress, but if you find that you aren't interested please don't send us to your "spam" folder - simply click on the "unsubscribe" tab located at the end of the newsletter.

---

**IN THE NEWS: Emilie at the HNOC**

On November 1st at the Historic New Orleans Collection on Royal Street right around the corner from the gallery, Emilie delivered a powerful 45 minute PowerPoint improvised talk about her artwork and that of her family. During this fully illustrated lecture, she spoke about an exhibition on view at The HNOC on the Jazz Poster Art of Waldemar Świerzy and how it relates to her own creations, and those of her renowned father Noel Rockmore. Then she introduced artworks by her father's parents, artists Gladys Rockmore Davis and Floyd Davis, within the context of portraying performers in action, ending with a full exploration of her own development as an artist here in New Orleans since 2011. Immediately following Emilie joined the Preservation Hall All-Stars outside and created a live drawing of them in performance.





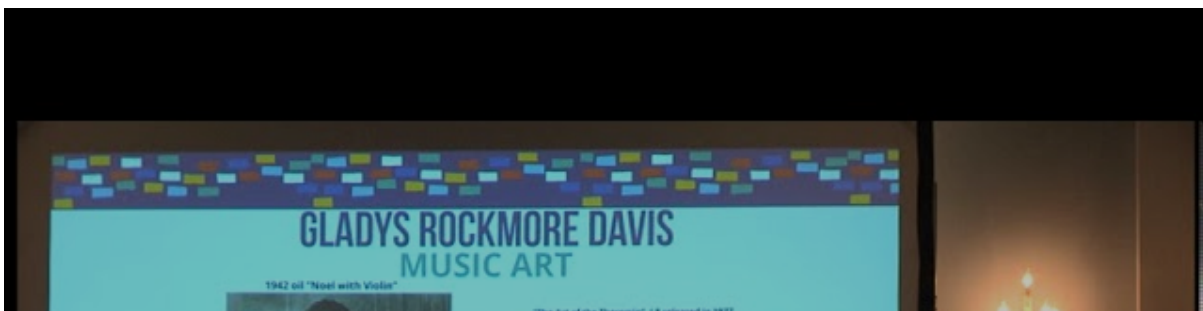
We thank curator and event interlocutor Eric Sieferth and Assoc. Dir. of Museum Programs Amanda McFillen for inviting Emilie and working with her to develop this program, and the HNOC for hosting the evening event. A special thank you to Ashley Shabankareh and the Preservation Hall Foundation for the participation of the Preservation Hall All-Stars! The band was as fantastic as could be. All photos of this event were taken by HNOC staff photographer Melissa Carrier, except for the last one which Esther Rose snapped.

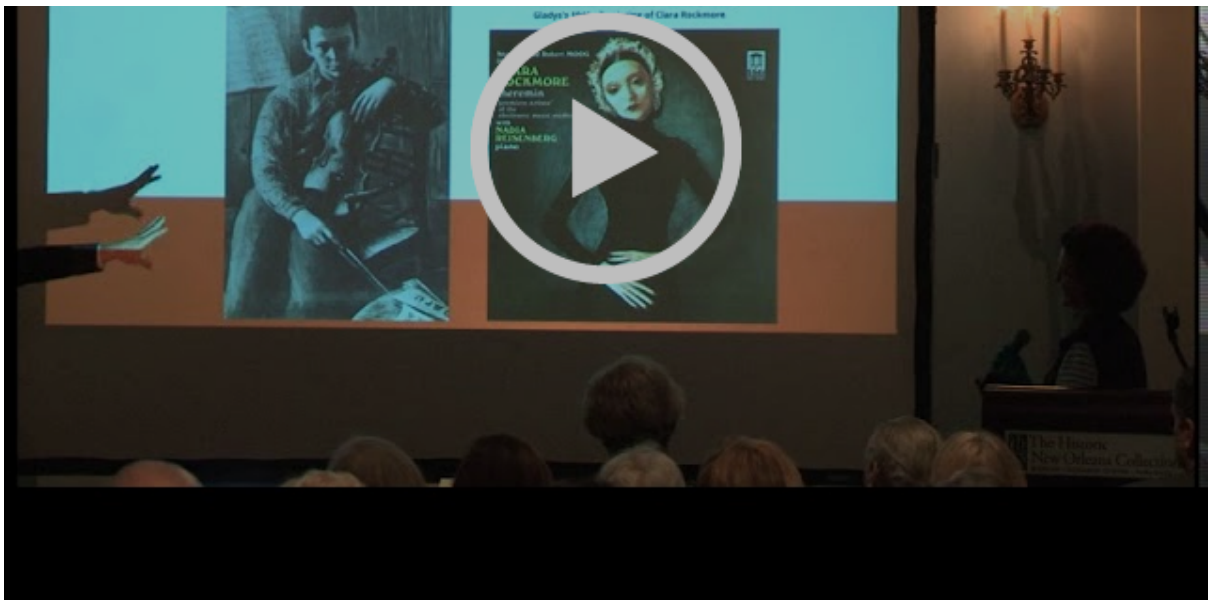
---

And here is the completed drawing of the Preservation Hall All Stars:



David L Harris, Kevin Louis, Louis Ford, Ernie Elly, Mitchell Player, Rickie Monie. PH All Stars at the HNOC, 11/01/2017. SKU: #8207 Unframed 18"x24" Price \$1,400.





**Click on circle to view video of the HNOC Presentation**

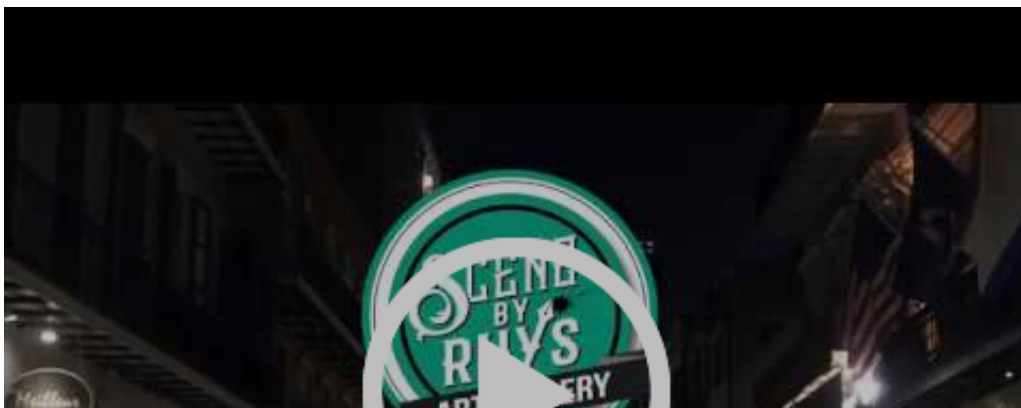
## Gallery One-Year Anniversary

November 12th, 2017 marked the One-Year Anniversary of Scene By Rhys Art Gallery! We held two Music & Art courtyard events that weekend to celebrate it, bringing back Tuba Skinny on the date itself, and hosting the Next Generation Band Featuring Christien Bold the night before. Thank you to everyone for your magnificent support of our mission to promote the music of New Orleans as seen through the unique artistic vision of Ms. Rhys.





We set Emilie up at a drawing station with her new portable drafting table and with this she was able to create for the first time live drawings larger than her sketchbooks have permitted. The spur for Emilie was learning that Bee Paper Co. now sells loose sheets of their Aquabee Super Deluxe Paper, which sketchbooks she has used for decades, in 18"x24" packs of 100! It is a grand leap up from 14"x17" to 18"x24"! And two of these large drawings created during the celebratory weekend sold in the gallery the following Monday.





**CLICK ON CIRCLE TO VIEW ANNIVERSARY VIDEO**

## **Music + Art Courtyard Events**

**Free and open to the public...children welcome!**



Spring weather means the courtyard music series is getting going again - most every weekend afternoon when rain isn't in the forecast, you will find Emilie there from 3-5pm at her portable drafting table drawing live musicians performing everything from Trad Jazz to Cajun Music. Bring in a drink from a bar down the street and grab a seat, dance, or c'mon in and view the art inside the gallery. We also serve coffee and cookies during each event.







Musicians Gina Leslie and Leonie Evans join artist Emilie Rhys right after Emilie completed a drawing of them performing in our courtyard on Saturday March 24th.

And here is the image, SKU #8243, sized 18"x24". Unframed price is \$1,800.





And here we see Emilie beginning a drawing of Jackson Lynch and Greg Sherman on Friday March 23rd.

The completed drawing, a couple of hours later, sized 18"x24". SKU #8241. Unframed price is \$2,000. The ability to create a drawing of this size and caliber on the spot is a rare gift. This one has a density of pen-work which relates it more to painting than drawing. The use of gloves to artfully smear the ink is a trademark of Emilie's work since 2014, giving them an unusual depth.





When framed up, these large originals make for a spectacular presentation on a wall! Witness this pen & ink and gouache painting of the Leroy Jones Quintet, created during a live music event at the gallery last October 20th:



Featured are Leroy Jones on trumpet and Katja Toivola on trombone to the right, and Barnabus Gold on drums, Nobu Osaki on bass and Detroit Brooks on guitar to the left. The painting itself is 18"x24", framed size 27"x32". SKU #8205. \$3,200.

## IN-HOUSE FRAMING

We are proud of our partnership with a splendid local framer who works primarily with galleries. He offers fast turnaround and excellent quality while striving to keep prices low as possible. And we ship art framed with plexiglass via Fedex all across the USA. You are also welcome to bring outside artwork for framing in the gallery. Choices of styles are always on view, in person and online in the category called "Framing By Rhys".



Trombonist Haruka Kikuchi, performing with Tom Saunders' Tomcats June 22nd, 2017. Artwork is 17"x14"; framed size 27"x24". SKU #7539, Price \$1,300



Jason Marsalis leading his band while playing the vibraphone at Snug Harbor, August 13th, 2017. Artwork is 17"x14"; framed size 24"x20". SKU #7769, framed price \$1,600.



The Frenchmen Street All Stars, pen & ink wash created February 6th 2012. Artwork is 14"x17", framed size 22"x25". SKU #1201, framed price \$1,200.

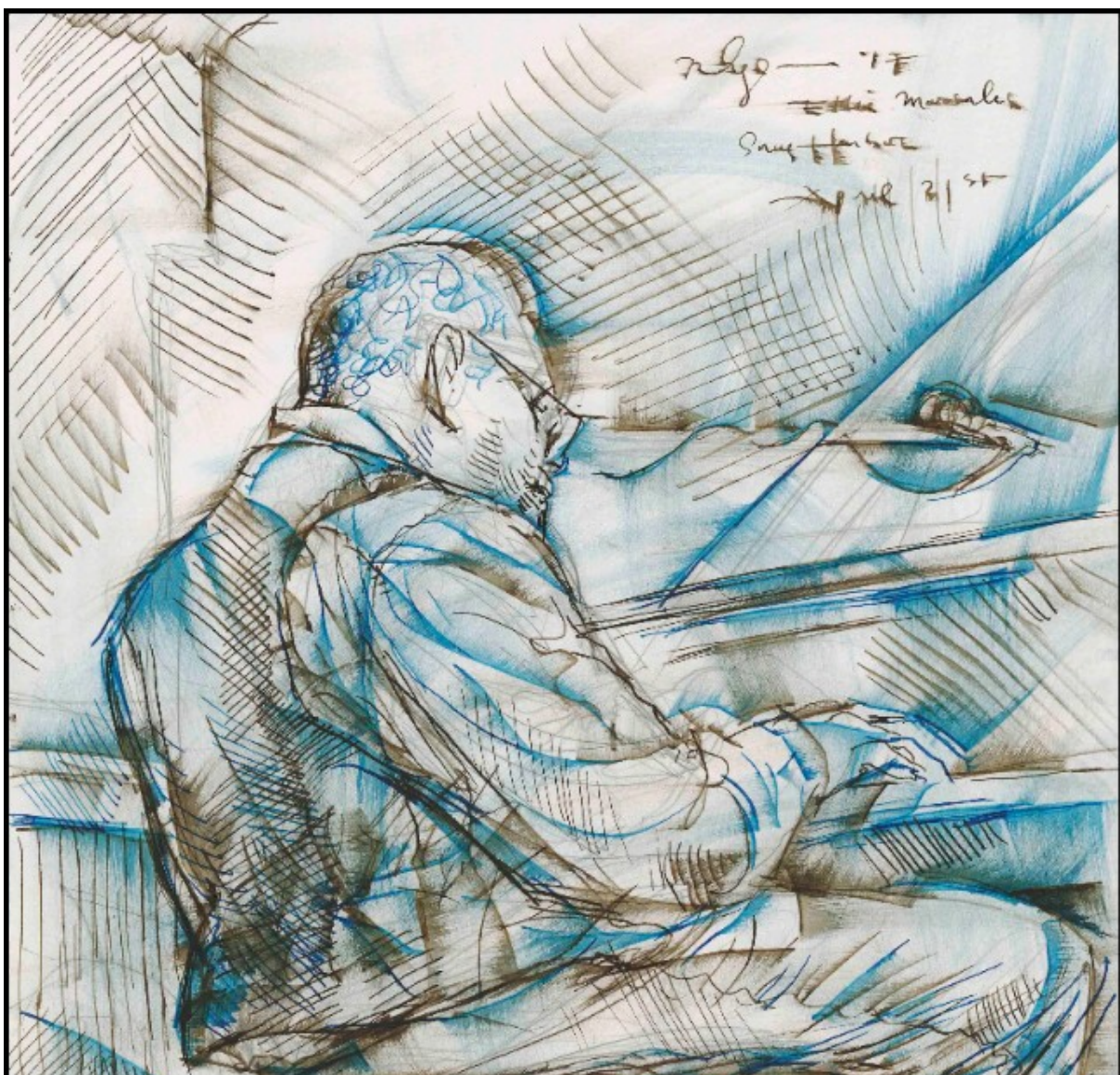
## UNFRAMED ORIGINALS

Most of the art available online and in the gallery on Toulouse are unframed original pen & ink drawings in many sizes ranging from 5"x7" up to 24"x36". Some have gouache added later on. Ask anyone on duty in the gallery to see any drawing not on display. Once you've made your choice, we can assist you in framing decisions, though you can, of course, take your purchases to your favorite local framer, to match what you've had them do before.





An original pen & ink/gouache of Sarah McCoy at the Spotted Cat, September 28th, 2017. SKU #8001, 14"x11" unframed price \$350. Next is an original pen & ink drawing of Quiana Lynell at Snug Harbor, July 2nd 2017. SKU #7495, 14"x11" Unframed price \$225

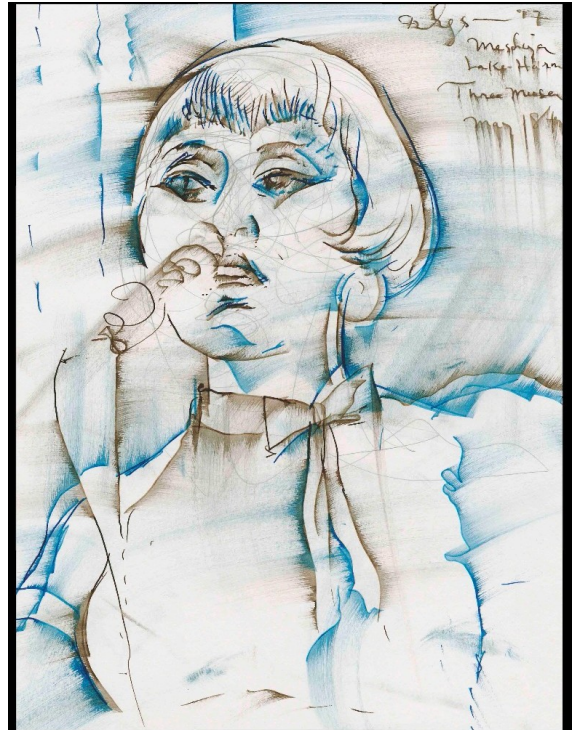




Ellis Marsalis, the magnificent patriarch of the remarkable musical family, at his regular gig on a Friday night at Snug Harbor. April 21st, 2017, SKU# 7301. This original drawing is 17"x14", unframed price \$1,500.



14"x11" original of Connie Jones, Kevin Clark and Tim Laughlin at Snug Harbor in October 2013. SKU #2729, unframed price is \$175.



14"x11" original drawing of Meschiya Lake at Three Muses in May 2017. SKU #6993, unframed price is \$325.

**ARCHIVAL PRINTS**

Looking for something small? 8x10 and 8x12 archival prints on smooth white paper at the gallery or on the website fit the bill. These make

8x10 - \$35

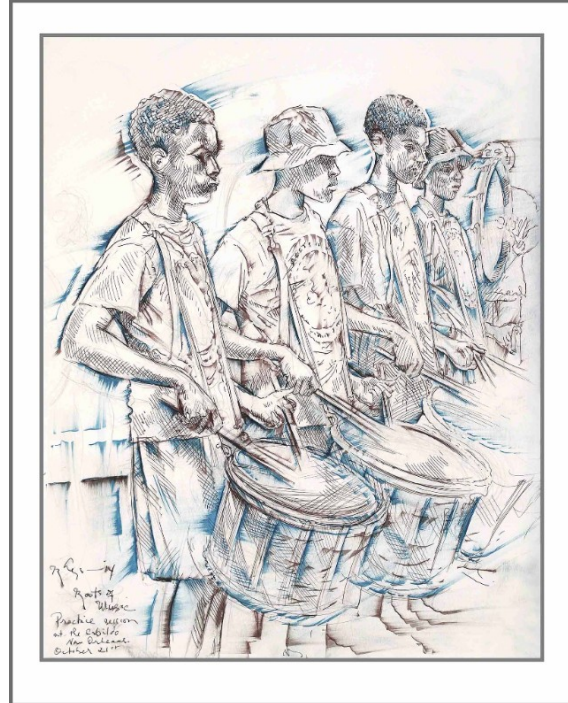
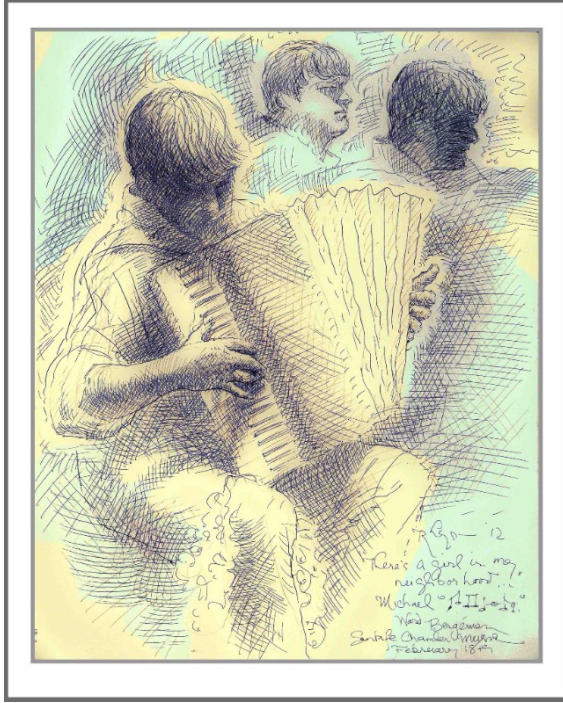
8x12 - \$40

10x20 Old stock \$105



gallery or on the website fit the bill! These make an attractive and very affordable way to start your Rhys collection, or to make a gift to a friend or family member. We also have a selection of images available in larger print sizes - new stock priced higher due to an increase in our costs.

10x20 - Old stock \$125  
 16x20 - New stock \$150  
 20x24 - Old stock \$175  
 20x24 - New stock \$200  
 Discounts available for multiple purchases.

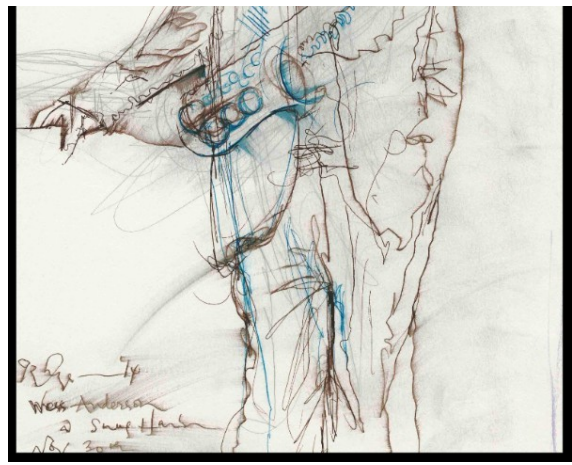
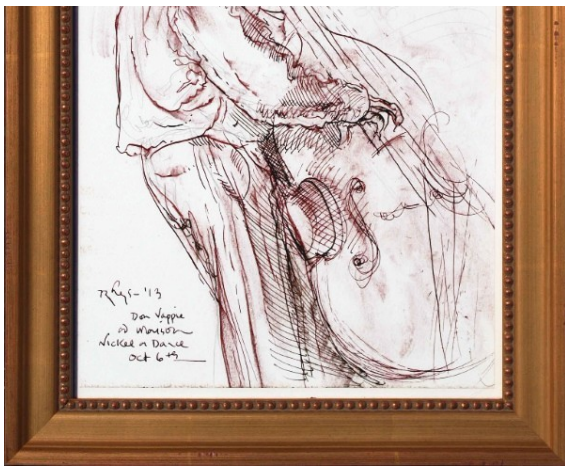


10x8 prints of Michael Ward-Bergeman in 2012 and Roots of Music drummers in 2014 showing the grey and white border we employ.



We are of course thrilled when art is purchased and given a place in friends' and clients' homes and offices. The following is a selection of recently-sold artworks, and except where noted, were framed in-house.





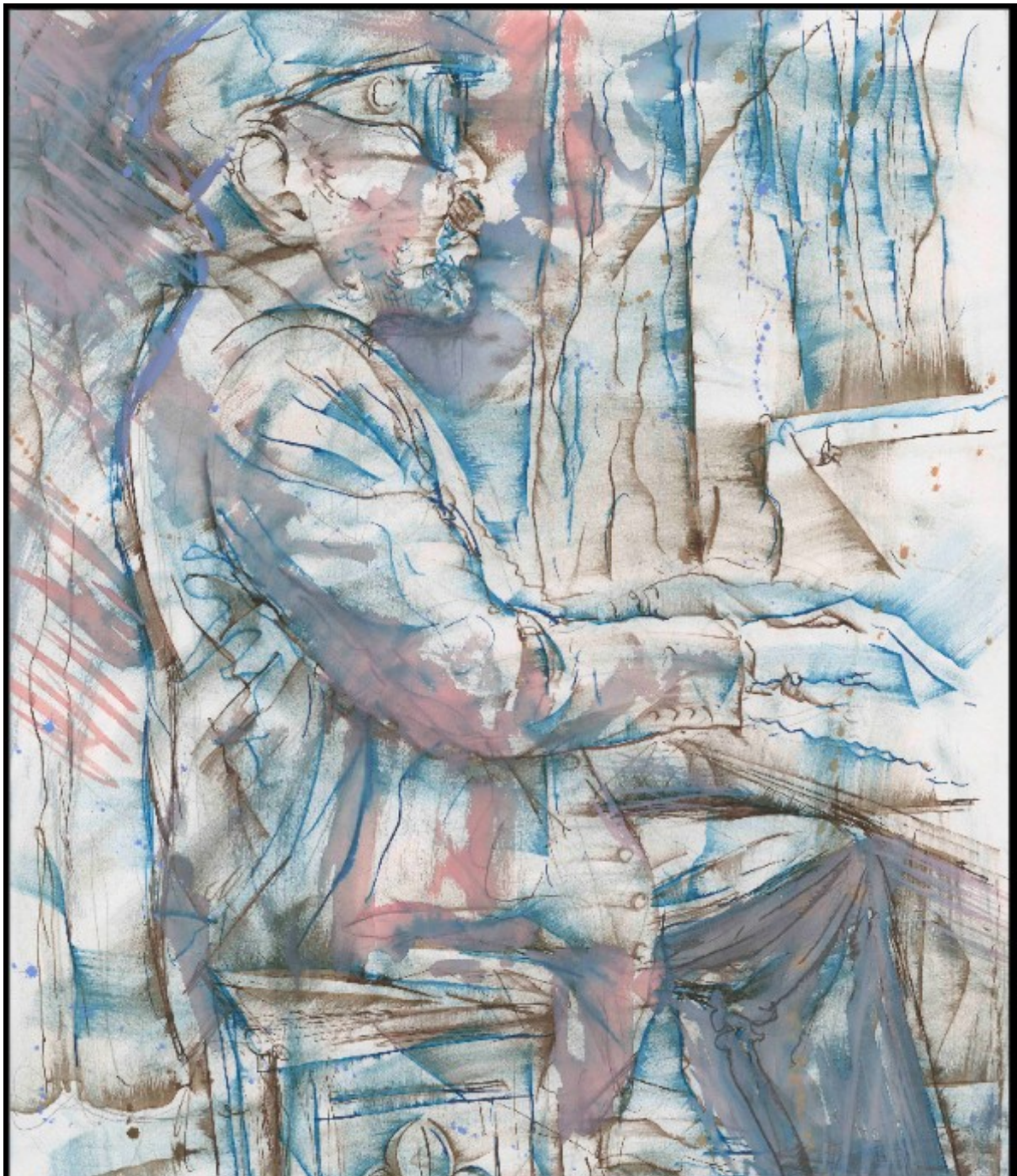
Above left, Don Vappie playing bass at Nickel-a-Dance in 2013; above right, is Wes "Warmdaddy" Anderson (unframed), at Snug Harbor in 2014.

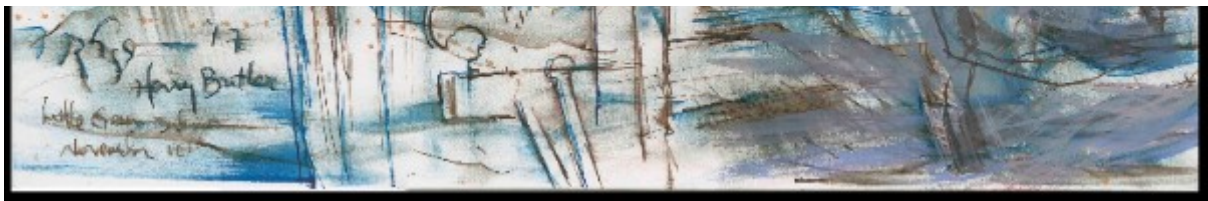




This 18"x24" drawing of local favorite band Tuba Skinny was one of three large-scale drawings created during our One-Year Anniversary Music + Art event on November 12th, 2017 and was purchased the next day. The client framed it up so beautifully back home in Boston.

Lucky them! They also purchased this incredible 24"x18" pen & ink/gouache painting of Henry Butler created November 10th 2017 at Little Gem Saloon:



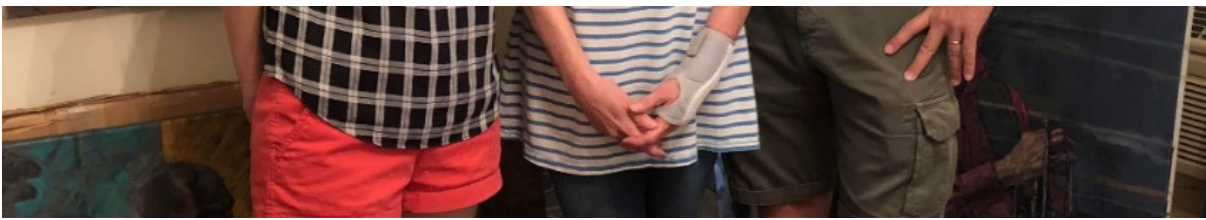


Emilie is here creating that very drawing of Henry Butler (photo by Rob Welch):



Some visitors to the gallery on Toulouse end up at Emilie's art studio a few blocks away on Orleans Avenue, where they can view an ongoing series of large oil canvases of musicians.





When Judy and Steven learned that Emilie had begun painting Jazz musicians here in New Orleans back in 2014, they asked to see the in-progress canvases at her Orleans Avenue art studio. Here they are standing with the artist in front of a 40"x30" canvas of Charlie Gabriel on the left and a 50"x28" canvas of Joe Lastie Jr on the right. They had been looking also at drawings Emilie created in Preservation Hall itself, and purchased an iconic one featuring her father Noel Rockmore's 1963 painting of Kid Sheik, seen below in the background:



They chose a sleek contemporary framing for this drawing, now installed at their home.

The two next drawings were chosen by a brother-sister pair from California, and they had us frame them identically even though the drawings will live in their respective homes. First is Jesse McBride at the Prime Example Jazz Club in October 2014, and the second is the Preservation Hall Jazz Band in September 2014. This one also has part of the Rockmore Kid Sheik painting visible in the background, above Ben Jaffe (playing cowbell).





The purchaser of the next drawing considered several possibilities before deciding on this rare Tableau drawing which actually shows the room setting, the doors all open to Jackson Square, in addition to the musicians and crowd.



Grayson Brockcamp, Nicholas Payton and David Torcanowsky thrilling the crowd at Tableau one Monday in February 2016.

Happiness is a freshly framed Rhys original, according to this photo sent to us by the client! Keep those photos coming, we love to see them.

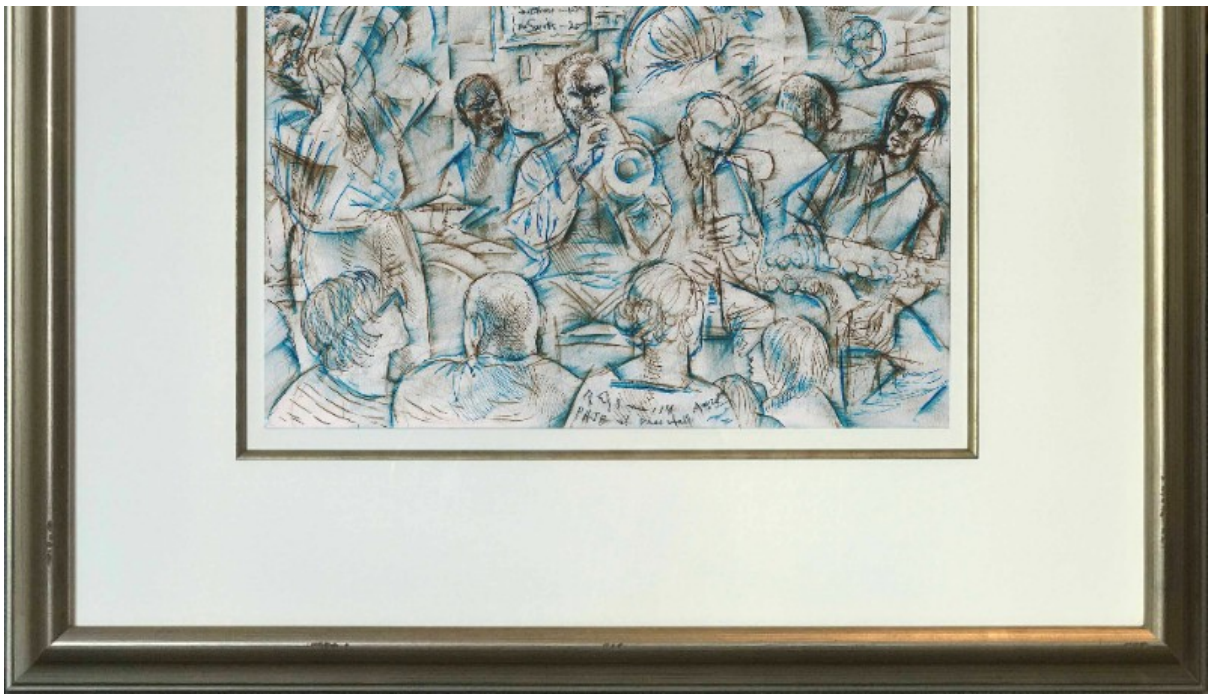


Brett, having just received his birthday gift...an original Rhys drawing of the Preservation Hall Jazz Band created the night of August 20th, 2014. While visiting the gallery for the first time in February 2017, Brett had purchased the pen & ink/gouache of the Stanton Moore Trio that we see here displayed on the wall, and then his wife Shannon contacted us to make a surprise gift for him in October. We are so very grateful for people like these two!

And here is a straight-on shot of the drawing, Preservation Hall Jazz Band at the Hall, Rhys NOLA Sketchbook #36, page #19:









Trumpeter/bandleader Connie Jones, captured displaying his habitual insouciance on the bandstand, at Snug Harbor, August 1st 2015. This framing includes a white linen liner personally tea-stained by the artist to give it a warm antique tone.

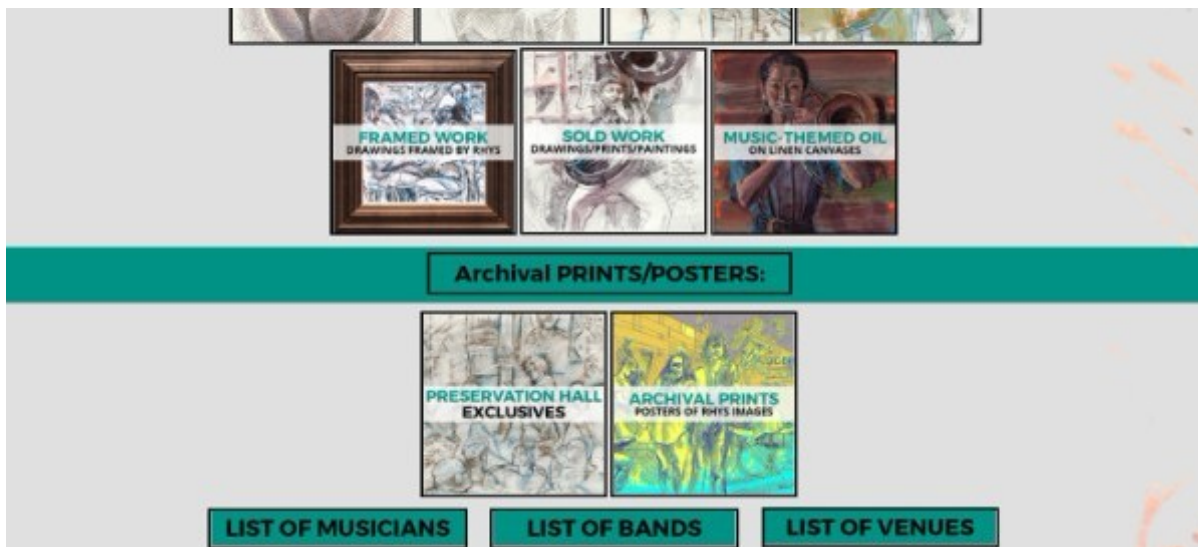
# WWW.SCENEBYRHYS.COM

Some people have asked for a direct link to the web storefront as distinct from the homepage - so here it is:

<http://scenebyrhys.com/storefront.html>

Below is a screenshot of the page that you'll reach by clicking on this link - then click on category icons to view the artwork featured in that group. You cannot access the search bar until you open a category.

The screenshot shows the 'Scene by Rhys Storefront' website. At the top, there is a navigation bar with a teal arrow pointing left labeled 'RETURN TO HOME PAGE', a central logo for 'SCENE BY RHYS STOREFRONT', and a teal arrow pointing right labeled 'FOLLOW US' with social media icons for Facebook and Instagram. Below the navigation bar is a section titled 'CATEGORIES to view the ART' with a subtext: 'Click on any box below to view all the drawings/paintings/prints in that category. Click on Storefront Logo up top to return to this page.' The main content area is titled 'ORIGINAL ARTWORK:' and features a grid of 12 category boxes, each with a representative artwork and text: 'THE MUSICIANS ORIGINALS IN PEN & INK', 'THE BANDS ORIGINALS IN PEN & INK', 'FEATURING FEMALES ORIGINALS IN PEN & INK', 'VENUE ORIGINALS IN PEN & INK', 'GOUACHE/WATERCOLOR ORIGINALS IN PEN & INK', 'THE SCENE ORIGINALS IN PEN & INK', 'MUSICAL ABSTRACTIONS ORIGINALS IN PEN & INK', 'MUSICAL FRAGMENTS ORIGINALS IN PEN & INK', 'INSTRUMENTS ORIGINALS IN PEN & INK', 'ORIGINAL ARTWORK FOR \$125 OR LESS', 'SIZE/ORIENTATION ORIGINALS IN PEN & INK', and 'YEAR OF CREATION ORIGINALS IN PEN & INK'.



Any questions, contact us at 504-258-5842 or [emilie@scenebyrhys.com](mailto:emilie@scenebyrhys.com).

We love the musicians of New Orleans and hope you do too! In homage to the inspiration of their music and image, a percentage of all sales (not including framing costs) is paid to the musicians depicted in each artwork - whether originals or prints. They also receive an information sheet about the artwork which includes a small repro of the artwork, and details about its creation.

[SHOP NOW](#)

[VISIT SITE](#)

[CONTACT US](#)

Contact us anytime for information or to make comments about the work. Have a look at the website, and please stop in at the art gallery located centrally in the beautiful and historic French Quarter in New Orleans.

**Emilie Rhys**  
**Artist & Gallery Owner**

Esther Rose  
Gallery Manager





---

Copyright © 2017 SCENE BY RHYS ART GALLERY, All rights reserved.

**Scene By Rhys Art Gallery:**  
708 Toulouse (Courtyard Entrance)  
just off Royal Street in the French Quarter  
New Orleans • Louisiana

Want to change how you receive these emails?  
You can [update your preferences](#) or [unsubscribe from this list](#)

New Orleans Music Inked Into Art By Emilie Rhys

---

This email was sent to << Test Email Address >>  
[why did I get this?](#) [unsubscribe from this list](#) [update subscription preferences](#)  
Scene By Rhys Art Gallery · 708 Toulouse St. Courtyard · New Orleans, La 70130 · USA

