

Scene By Rhys Art Gallery Newsletter #3

[Campaign Preview](#)

[HTML Source](#)

[Plain-Text Email](#)

[Details](#)

SCENE BY RHYS ART GALLERY | E-Newsletter #3

[View this email in your browser](#)



Summer...In To Fall

**From the Scene by Rhys Art Gals - Emilie Rhys and
Esther Rose at 708 Toulouse (Courtyard) in New Orleans!**

As the summer season winds down we are shifting our attention ahead to autumn, which in New Orleans - as most anywhere - is beautiful. And here at the gallery we are gearing up for our One Year Anniversary Celebrations which will take place the weekend of November 11-12. We will send out a special short newsletter announcing our plans to mark this accomplishment. Great excitement was felt by all when the artist and her work caught the eye of local WWL-TV anchor Mike Hoss late last year which finally culminated in his production of a two-minute TV feature this spring. More on this below.

The following photos are to introduce two lovely ladies, Amy Stone (L) and Windy Johnson (R), who have been filling in at the gallery for Esther this summer while she's been out-of-town visiting family and friends and doing some exciting recording projects, and they'll be on hand after her return.



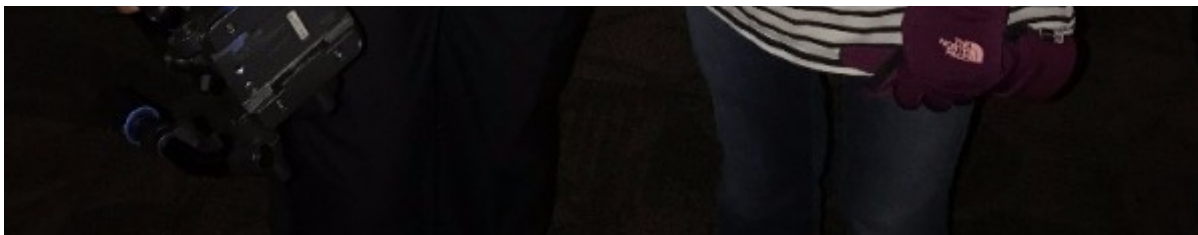
We hope you will enjoy reading about our progress, but if you find that you aren't interested please don't send us to your "spam" folder - simply click on the "unsubscribe" tab located at the end of the newsletter.

IN THE NEWS: WWL-TV

Anchor Mike Hoss is seen here interviewing Emilie Rhys at the Scene By Rhys Art Gallery the afternoon of May 31st, 2017 for a feature on the woman and the work that aired June 7th, 2017. Tom Moore is behind the camera filming the interview. Then Mike and Emilie are seen at Prime Example Jazz Club after he and Tom filmed Emilie at work drawing musicians the night of May 24th. Photos by Esther Rose. View the WWL-TV feature below.







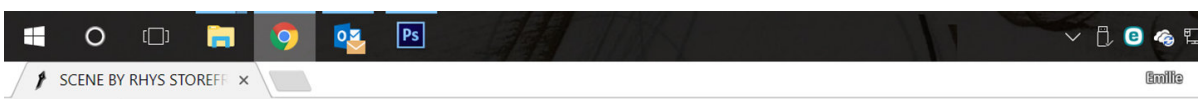
CLICK TO VIEW VIDEO OF THE WWL-TV FEATURE

WWW.SCENEBYRHYS.COM

Some people have asked for a direct link to the web storefront as distinct from the homepage - so here it is:

<http://scenebyrhys.com/storefront.html>

Below is a screenshot of the page that you'll reach by clicking on this link - once there, just click on any of the category icons to view the artwork featured in that group. Recently we've been uploading brand new work and adding new examples to the "Framed By Rhys" section. At your leisure, check it out!





CATEGORIES to view the ART

Click on any box below to view all the drawings/paintings/prints in that category. Click on Storefront Logo up top to return to this page.

ORIGINAL ARTWORK:

 THE MUSICIANS ORIGINALS IN PEN & INK	 THE BANDS ORIGINALS IN PEN & INK	 FEATURING FEMALES ORIGINALS IN PEN & INK	 VENUE ORIGINALS IN PEN & INK
 GOUACHE/WATERCOLOR ORIGINALS IN PEN & INK	 THE SCENE ORIGINALS IN PEN & INK	 MUSICAL ABSTRACTIONS ORIGINALS IN PEN & INK	 MUSICAL FRAGMENTS ORIGINALS IN PEN & INK
 INSTRUMENTS ORIGINALS IN PEN & INK	 ORIGINAL ARTWORK FOR \$125 OR LESS	 SIZE/ORIENTATION ORIGINALS IN PEN & INK	 YEAR OF CREATION ORIGINALS IN PEN & INK
 FRAMED WORK DRAWINGS FRAMED BY RHYS	 SOLD WORK DRAWINGS/PRINTS/PAINTINGS	 MUSIC-THEMED OIL ON LINEN CANVASES	

Archival PRINTS/POSTERS:

 PRESERVATION HALL EXCLUSIVES	 ARCHIVAL PRINTS POSTERS OF RHYS IMAGES
---	--

- LIST OF MUSICIANS** **LIST OF BANDS** **LIST OF VENUES**

Artwork is available both online and at the new Scene By Rhys Art Gallery in the French Quarter which opened November 12th, 2016.

708 Toulouse Street
Courtyard Entrance • Just Off Royal St | French Quarter • New Orleans
OPEN: THURS-MON 12pm-6pm

**NEW ORLEANS MUSIC
INKED INTO ART
BY EMILIE RHYS**
THE SMEAR OF INK - THE STROKE OF GENIUS

In homage to the inspiration of their music and image, a percentage of all sales (not including framing costs) is paid to the musicians/bands depicted in each artwork – whether originals or prints.



Our first summer proved especially challenging due to unprecedented heavy rains in June, July and early August, nearly every day. Even so,



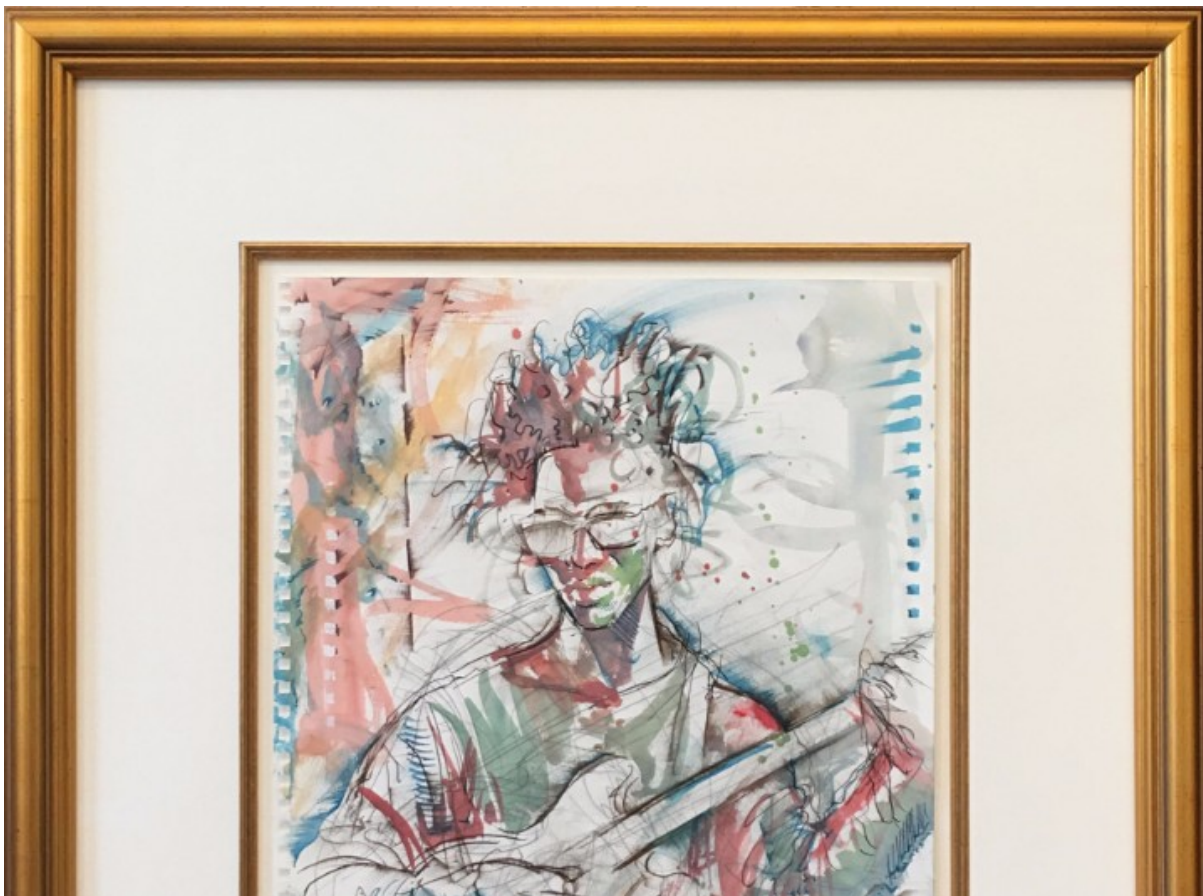
we have so enjoyed welcoming old friends and making new ones within our gallery on Toulouse. We have started displaying large oil canvases on the gallery walls along with the pen & ink drawings, and in future as more oils are completed, we will be shifting those upstairs to the gallery office.

IN-HOUSE FRAMING

Here are a few examples of Rhys pen & ink original drawings finished in the studio with gouache paint, and framed by the artist. All are on display in the gallery at 708 Toulouse Street (courtyard entrance), near Royal.

Shipping via Fedex all across the USA.

You are welcome also to bring outside artwork for framing in the gallery.





Guitarist Dominic Minix, performing with the Christian Scott Quintet the night of February 13th, 2016. Framed size 32"x27". SKU #5663, Price \$1,350



Vocalist Stephanie Jordan leading her band in the WWOZ Jazz Tent at Jazz Fest, April 28, 2016. Framed size 23"x20". SKU #5967, Price \$975.



Jason Marsalis leading his band from the Vibraphone at Snug Harbor, the evening of February 13th, 2014. Framed size 19"x16". SKU #2951, Price \$715





Bassist Pat Casey leading his band at the Spotted Cat the night of August 5th, 2012. Framed size 18"x11". SKU #1748, Price \$475

UNFRAMED
ORIGINALS



Above left, Pat Casey and Robin Barnes at Jazz Fest 2017, SKU #7167, Price \$400; above right, Meghan Swartz at the Palm Court, SKU #7435, Price \$350

ARCHIVAL PRINTS

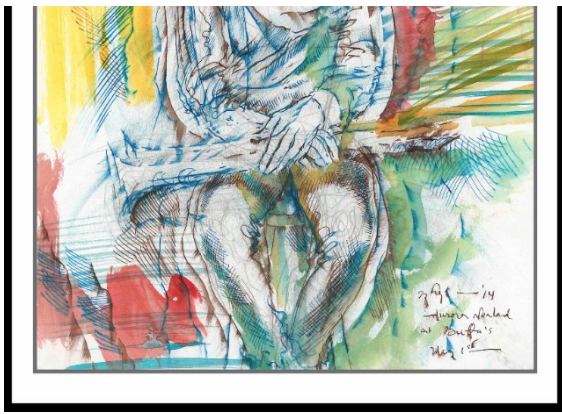
Looking for something small? View our collection of 8x10 archival prints on smooth white paper at the gallery or on the website. These make an attractive and very affordable way to start your Rhys collection, or to make a gift to a friend or family member.

8x10 - \$35

16x20 - \$125

In addition, we have prints and posters up to 24x36, some with commemorative text.





Above left, an unframed print of Aurora Nealand; above right, a print of Christian Scott framed by the client in Wisconsin.



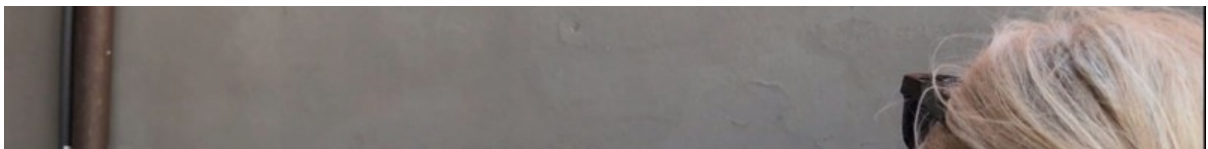
All of the following artworks were framed in-house. We are proud of our partnership with a local professional to provide speedy and quality framing for our clients.



Above left, Tom McDermott playing solo piano at Three Muses on March 7th, 2013; above right, Shannon Powell leading the band at Maison Nickel-A-Dance, October 24, 2015.



Andriu Yanovsky just after having unwrapped his birthday present, a Rhys original drawing of him playing the Hammond B-3 organ at the Maple Leaf Bar this July. The artist had a wonderful time too! Gift and photo by Emily Kanner





Mimi & "Knuckles" visiting from Wisconsin, celebrating their purchase of a drawing depicting Miss Sophie Lee in performance at the Spotted Cat in 2012.
Rita Posselt photographing in the foreground.



The Stanton Moore Trio performing at Spug Harbor the night of February 18th

The Stanton Moore Trio performing at Gray Harbor the night of February 14th, 2014 - one of many epic evenings listening to greatness.



Bassist Amina Michele Scott purchased this drawing of her for her mother. We got it framed for her that afternoon so that she could get on an airplane with it the next day.



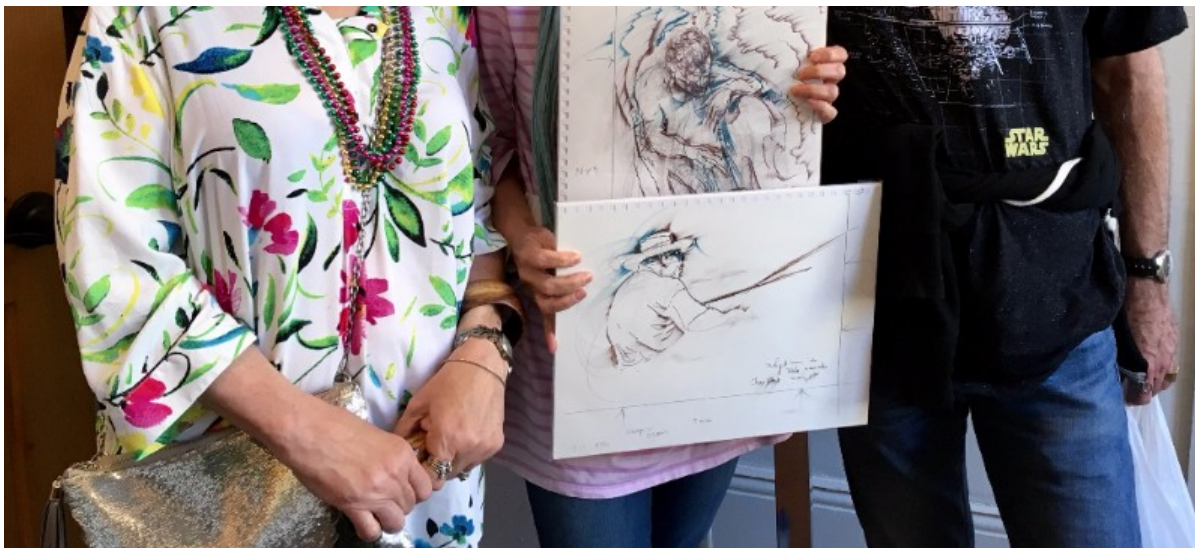


Kelly & Carolyn McGuire, happy new owners of an original Rhys drawing depicting Jason Marsalis playing vibraphone at Tableau late in 2015.



Cynthia Walker loved how we framed our print of Sarah McCoy for her!





Marde and Bob Gregory, having just added two more Rhys drawings to their collection, which graces their home in Los Angeles.

Any questions, contact us at 504-258-5842 or emilie@scenebyrhys.com.

We love the musicians of New Orleans and hope you do too! In homage to the inspiration of their music and image, a percentage of all sales (not including framing costs) is paid to the musicians depicted in each artwork - whether originals or prints. They also receive an information sheet about the artwork which includes a small photo of the artwork, and details about its creation.

[SHOP NOW](#)

[VISIT SITE](#)

[CONTACT US](#)

Contact us anytime for information or to make comments about the work. Have a look at the website, and please stop in at the art gallery located centrally in the beautiful and historic French Quarter in New Orleans.

Emilie Rhys
Artist & Gallery Owner

Esther Rose
Gallery Manager





Copyright © 2017 SCENE BY RHYS ART GALLERY, All rights reserved.

Scene By Rhys Art Gallery:
708 Toulouse (Courtyard Entrance)
just off Royal Street in the French Quarter
New Orleans • Louisiana

Want to change how you receive these emails?
You can [update your preferences](#) or [unsubscribe from this list](#)

New Orleans Music Inked Into Art By Emilie Rhys

This email was sent to << Test Email Address >>
[why did I get this?](#) [unsubscribe from this list](#) [update subscription preferences](#)
Scene By Rhys Art Gallery · 708 Toulouse St. Courtyard · New Orleans, La 70130 · USA

