

# Scene By Rhys Art Gallery Newsletter #2

[Campaign Preview](#)

[HTML Source](#)

[Plain-Text Email](#)

[Details](#)

SCENE BY RHYS ART GALLERY | E-Newsletter

[View this email in your browser](#)



## HAPPY FESTIVAL SEASON

**From the Scene by Rhys Art Gals - Emilie Rhys and  
Esther Rose at 708 Toulouse (Courtyard) in New Orleans!**

We are celebrating our first season of Carnival & Music Festivals from within the gracious comfort and elegance of our gallery & courtyard. We invite you to stop by and relax with us as you make your way through the French Quarter, enjoying the revelry of the season. Slowly but surely we are adding to our courtyard furniture - two park benches are the latest to arrive - and spring flowers are bursting with color in the old cistern.





We hope you will enjoy reading about our progress, but if you find that you aren't interested please don't send us to your "spam" folder - simply click on the "unsubscribe" tab located at the end of the newsletter.



It is with such gratitude and a sense of genuine fulfillment that we report on 4 months-plus of business! We

have so enjoyed welcoming old friends and making new ones within our gallery on Toulouse, and can attest to the popularity of the artwork and the space itself - even as we look ahead to myriad improvements.

Please note: We normally are open Thursday-Monday 12pm-6pm, but from now through Jazz Fest (March 29th-May 8th) we will be open 7 days a week, 12pm-6pm.

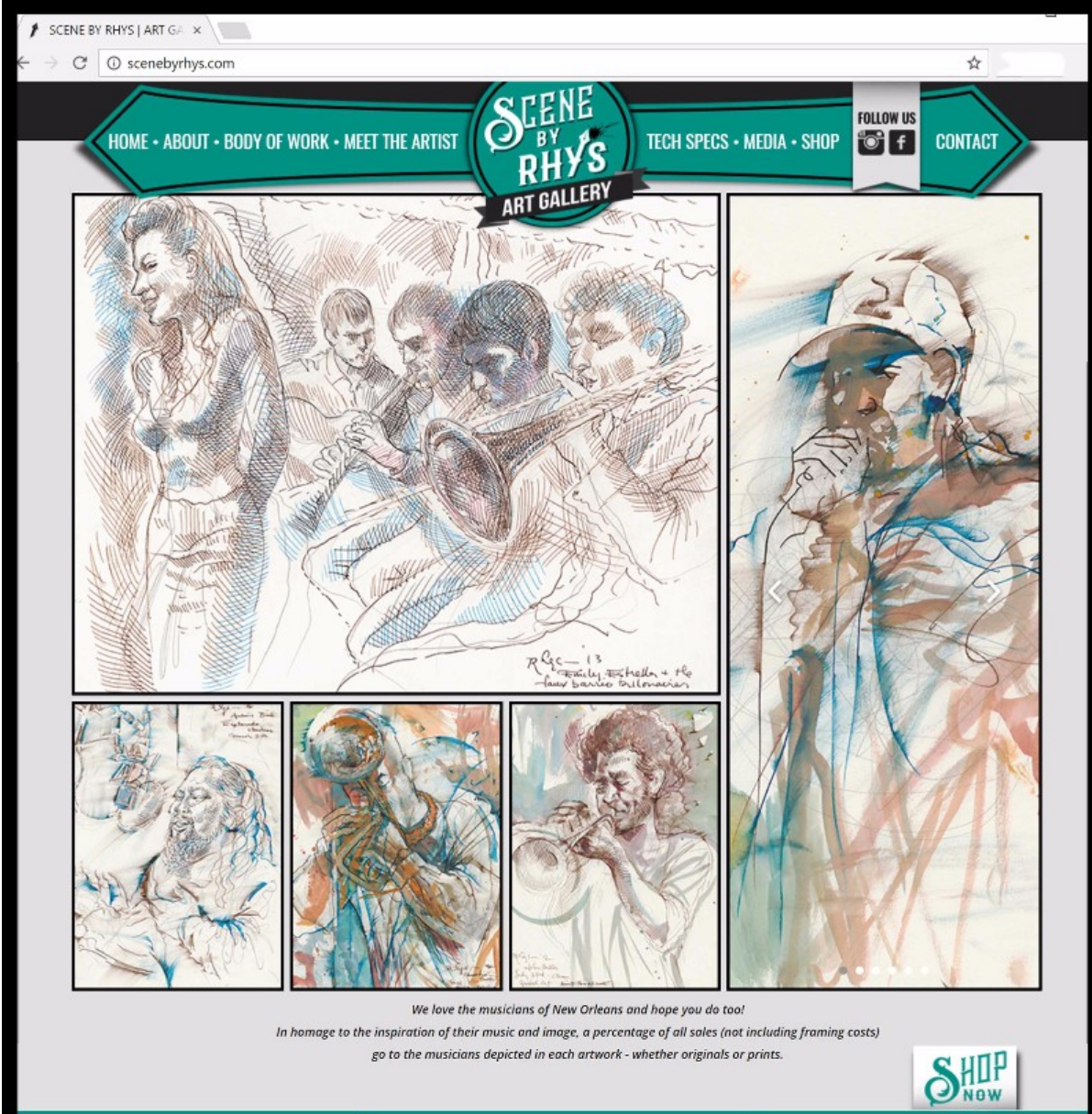
[WWW.SCENEBYRHYS.COM](http://WWW.SCENEBYRHYS.COM)



**THRILLED TO ANNOUNCE** that SceneByRhys.com has been gloriously redesigned by New Orleans' own Laura Kuhn, the wizard behind the graphic design firm Midnight Boheme.

The online shop awaits Laura's magic touch and while it is undergoing redesign, don't be surprised if it looks a little odd - rest assured all the pictures are as easy to find as before.

We invite you to have a look at your earliest convenience, and do let us know what you think - there are many features new to the site, as seen in this preview below (same web address, new look).



The screenshot shows the website interface for Scene By Rhys Art Gallery. At the top, there is a navigation bar with teal arrow-shaped buttons containing the text: HOME • ABOUT • BODY OF WORK • MEET THE ARTIST, TECH SPECS • MEDIA • SHOP, and CONTACT. A central logo reads "SCENE BY RHY'S ART GALLERY". To the right, a "FOLLOW US" section includes icons for Instagram and Facebook. The main content area features several ink drawings of musicians. A large drawing on the left depicts a woman and a group of men playing instruments. To its right is a vertical drawing of a man in a hat. Below these are three smaller square drawings of musicians. A caption below the drawings reads: "We love the musicians of New Orleans and hope you do too! In homage to the inspiration of their music and image, a percentage of all sales (not including framing costs) go to the musicians depicted in each artwork - whether originals or prints." A "SHOP NOW" button is located in the bottom right of the artwork section. A teal banner at the bottom of the page contains the word "INTRODUCTION" in white capital letters.

## NEW ORLEANS MUSIC INKED INTO ART BY EMILIE RHY'S

Scene by Rhys.com and the brand new Scene By Rhys Art Gallery present an absolutely unique view of New Orleans music as seen through the eyes of local artist Emilie Rhys whose fine-art pen and ink drawings, created during live performances in the city's famous clubs and festivals, capture the energy, intensity and movement so vividly that you can hear the music in the artwork.

## INKED INTO ART COURTYARD MUSIC SERIES

The gallery has hosted afternoon musical events since our opening in November, and we look forward to planning new ones in the future. Emilie has of course produced some of her signature pen and ink drawings during the events, but she also surprised us one day by creating a full-color pastel. Gallery intern Sofia Riggio made this video showing its development while Jackson Lynch & Van Burchfield performed the afternoon of February 11th:



[CLICK TO VIEW VIDEO OF AN ARTWORK IN PROGRESS](#)

## COURTYARD MUSIC SERIES

...Continues this coming Saturday, April 1st from 3pm-5pm. Emilie will resume work on this pastel and, time permitting, start a second painting. Come join us for music and art and refreshments in the courtyard!





Emilie with the gallery piano purchased late last year in Treme, a Mason & Hamlin from 1901, the same vintage as Louis Armstrong! These ivories have been tickled by Tom McDermott, and many a visitor. Photo credit Akasha Rabut.

## ORIGINAL DRAWINGS

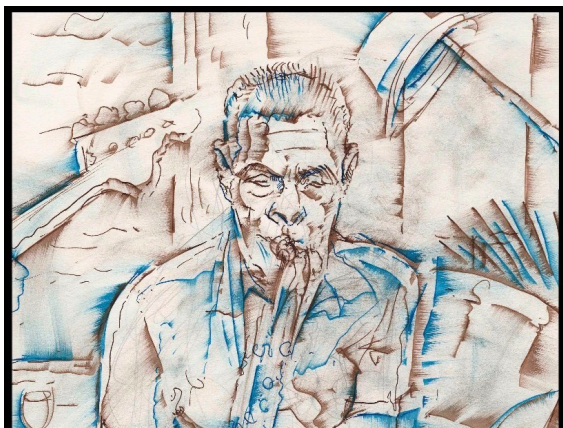
**ON VIEW IN THE GALLERY ON TOULOUSE:**



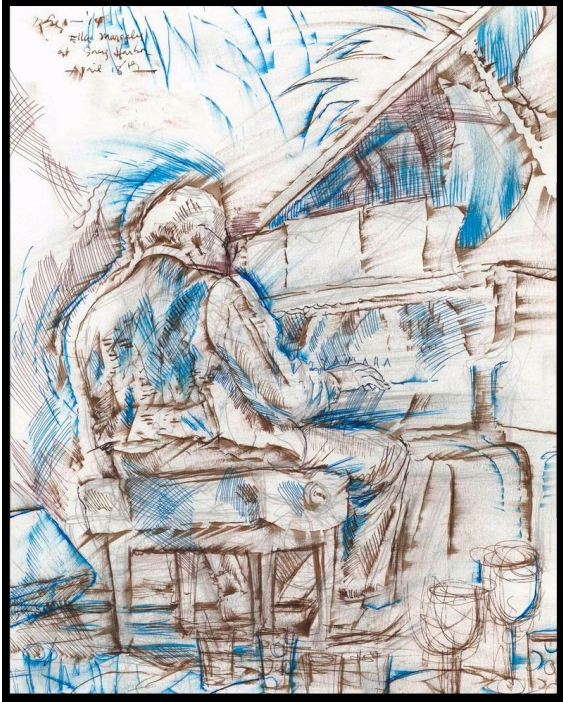
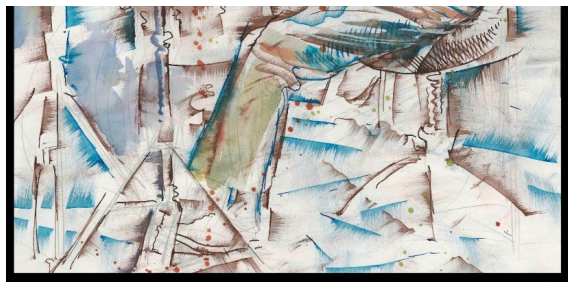
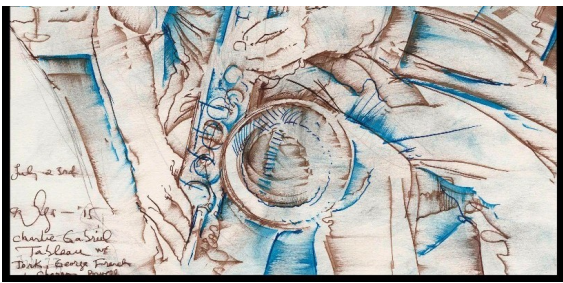


Gregory Agid leading his band at Maison the night of July 21st 2015, #4831

Below left, Charlie Gabriel, #4835; below right, Shannon Powell, #4961







Above left, Ellis Marsalis, #3269; above right, Sarah McCoy & Dizzy, #3203







The Preservation Hall All-Stars Featuring Leroy Jones, #3529

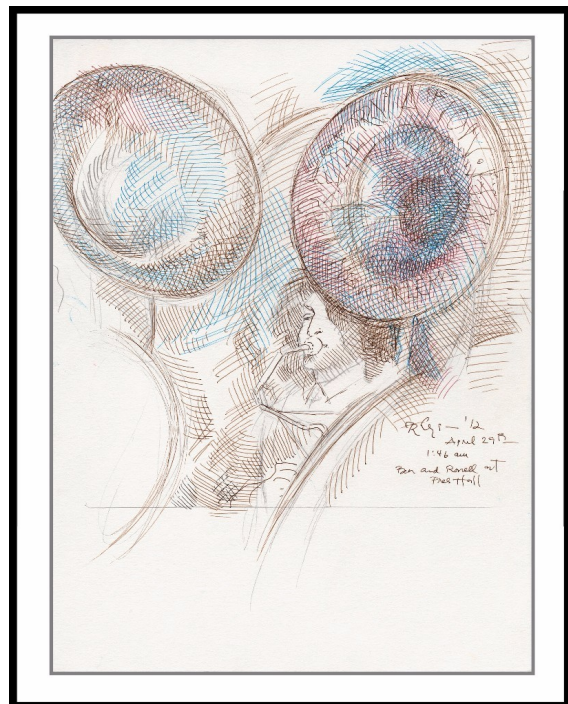
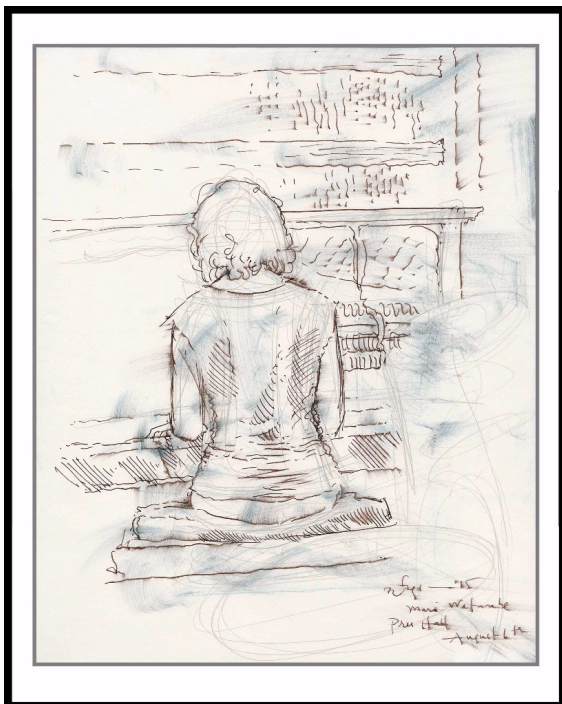
## ARCHIVAL PRINTS

Looking for something small? View our collection of 8x10 archival prints on smooth white paper at the gallery or on the website. These make an attractive and very affordable way to start your Rhys collection, or to make a gift to a friend or family member.

8x10 - \$35

16x20 - \$125

In addition, we have prints and posters up to 24x36, some with commemorative text.



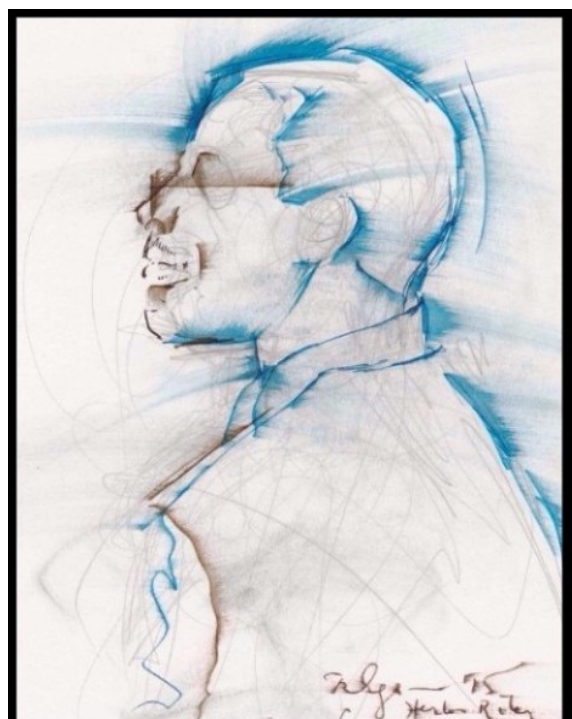
Above left, Mari Watanabe, Print #29; above right, Benjamin Jaffe, Print #25.

## SOLD RECENTLY





An ink and watercolor painting of the Adonis Rose Quintet created at the Irving Mayfield Jazz Playhouse on July 13th 2013, #2469





Above left, the Washboard Chaz Blues Trio, #2485; above right, Herlin Riley, #4233.



Emilie Rhys and Brett Conway posing in front of the painting of the Stanton Moore Trio that Brett had just purchased in January. Photo credit Akasha Rabut.

And here is Brett's painting of the Stanton Moore Trio created at Snug Harbor February 16th 2016, #5673

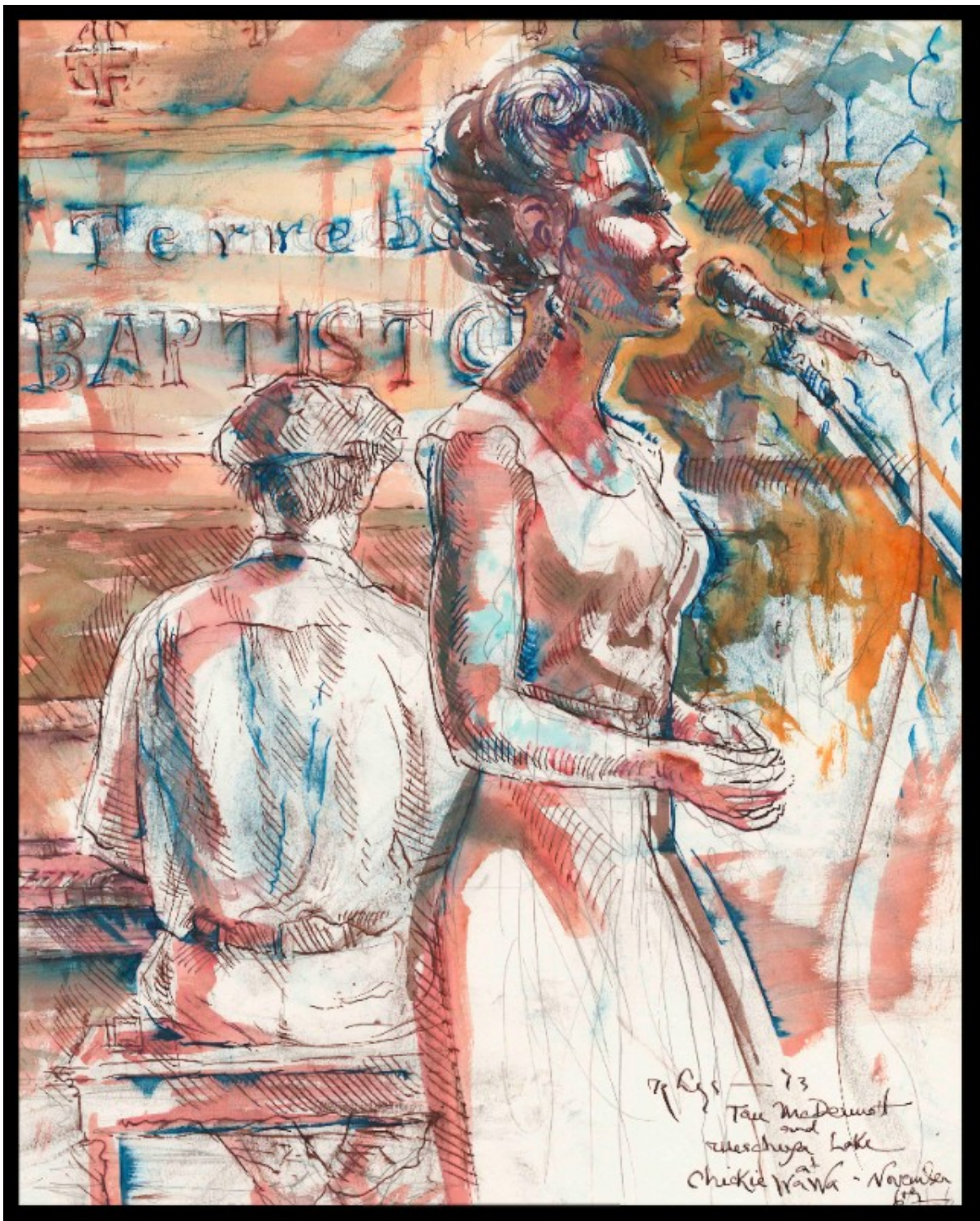






The above painting of Ashlin Parker was framed by the client in North Carolina.





This beauty of Tom McDermott & Meschiya Lake  
is now residing in London, England!

**IN-HOUSE  
FRAMING**





At the Scene By Rhys Art Gallery, your purchases can be framed in-house! We've partnered with a near-by framer to take care of our customers, and this picture shows four different options with the same frame. Many other styles and types of framing are available. Just ask to see them, anytime.

Below is an example of a big frame with no mat:



And below is an example of an artwork floated, with a fillet to match the frame:





Any questions, contact us at 504-258-5842 or [emilie@scenebyrhys.com](mailto:emilie@scenebyrhys.com).



*In homage to the inspiration of their music and image, the artist Emilie Rhys pays a commission to musicians and/or bands depicted in the artworks from every sale (excluding framing costs), whether originals or prints.*

SHOP NOW

VISIT SITE

CONTACT US

We look forward to visiting with you in the new gallery in the heart of the historic French Quarter! Note: From now through May 8th, we will be open seven days a week.

Emilie Rhys  
Artist & Gallery Owner

Esther Rose  
Gallery Manager



*Copyright © 2017 SCENE BY RHYS ART GALLERY, All rights reserved.*

**Scene By Rhys Art Gallery:**

708 Toulouse (Courtyard Entrance)  
just off Royal Street in the French Quarter  
New Orleans • Louisiana

Want to change how you receive these emails?  
You can [update your preferences](#) or [unsubscribe from this list](#)

New Orleans Music Inked Into Art By Emilie Rhys



---

This email was sent to << Test Email Address >>  
[why did I get this?](#) [unsubscribe from this list](#) [update subscription preferences](#)  
Scene By Rhys Art Gallery · 708 Toulouse St. Courtyard · New Orleans, La 70130 · USA

