

Exhibition Update Newsletter

[Campaign Preview](#)

[HTML Source](#)

[Plain-Text Email](#)

[Details](#)

2019 Gallery Happenings | Volume 4, Issue #4

[View this email in your browser](#)



We are grateful for your continued interest and support. The mission here remains the same: Celebrate Art + Music.

If you haven't seen Emilie out drawing much this year, here's why:



Emilie surrounded by recent output in her painting studio on June 22nd, 2019.

Creating new art for a museum show is a big undertaking! The much-anticipated **Rockmore & Rhys** exhibit of music-themed canvases and drawings -- the first ever public showing of this father/daughter pair-- slated to open in several second floor gallery rooms in the [New Orleans Jazz Museum](#) on **Thursday January 30th, 2020**, now has an official name:

New Orleans Music Observed: The Art of Noel Rockmore and Emilie Rhys

In the next two photos, Emilie is seen in June 2019 working on her ***Colored Waifs Home Homage***, featuring Louis Armstrong as a boy circa 1913, based upon a contemporaneous photograph. Work on this canvas has been long and arduous. The original photograph is a fascinating document showing a glimpse into Armstrong's early life. The painting will be showcased in the exhibit.





And Emilie has been stationed in her private painting studio located on Orleans Street creating many oil portraits, including developing a new format: Oil-on-copper miniatures. Working in oils so small in scale is a first for Emilie, whose only previous history with miniatures was watercolors in the 1980's.





Photos by Sophie Germer, June 22nd 2019.

Some of these photos were used in an article published in the French Quarter Journal in August. Click on this link to read it now:
<https://www.frenchquarterjournal.com/archives/july-30th-2019>

Oil portraits represent an investment of time and talent, and because these are painted from life (excepting the Colored Waifs Home Homage), they require multiple live studio sessions with musicians. Here is a sampling of recent models making their way to her studio:





Blues master Little Freddie King before we started our first session on 9/25;

Trad-Jazz trombonist Haruka Kikuchi with baby Shouta (pianist/hubby Z2 joins in the painting) after the sixth studio session on 9/21; and New Orleans drum legend Johnny Vidacovich after the third session for his portrait on 9/9.

OIL ON COPPER MINIATURES:





This series of miniatures was begun in May 2019. The top painting is of Robyn Halvorsen and Tom Houghton, oil on 12" x 12" copper plate. Next is Tommy Sancton with his clarinet, oil on 10" x 8" copper plate; followed by Jesse McBride, oil on 10" x 8" copper plate. Though usually used for etchings, copper is also an old support for oil paintings. Two of Rembrandt's early self-portraits are on copper.





Veteran New Orleans bandleader, singer, and guitarist (not to mention humorist) Deacon John after our studio session on September 18th.

Once all the work for the museum exhibit has been chosen, there will be plenty of new oil paintings on copper available for sale in the gallery on Toulouse, and indeed, Emilie will continue to schedule live studio sessions

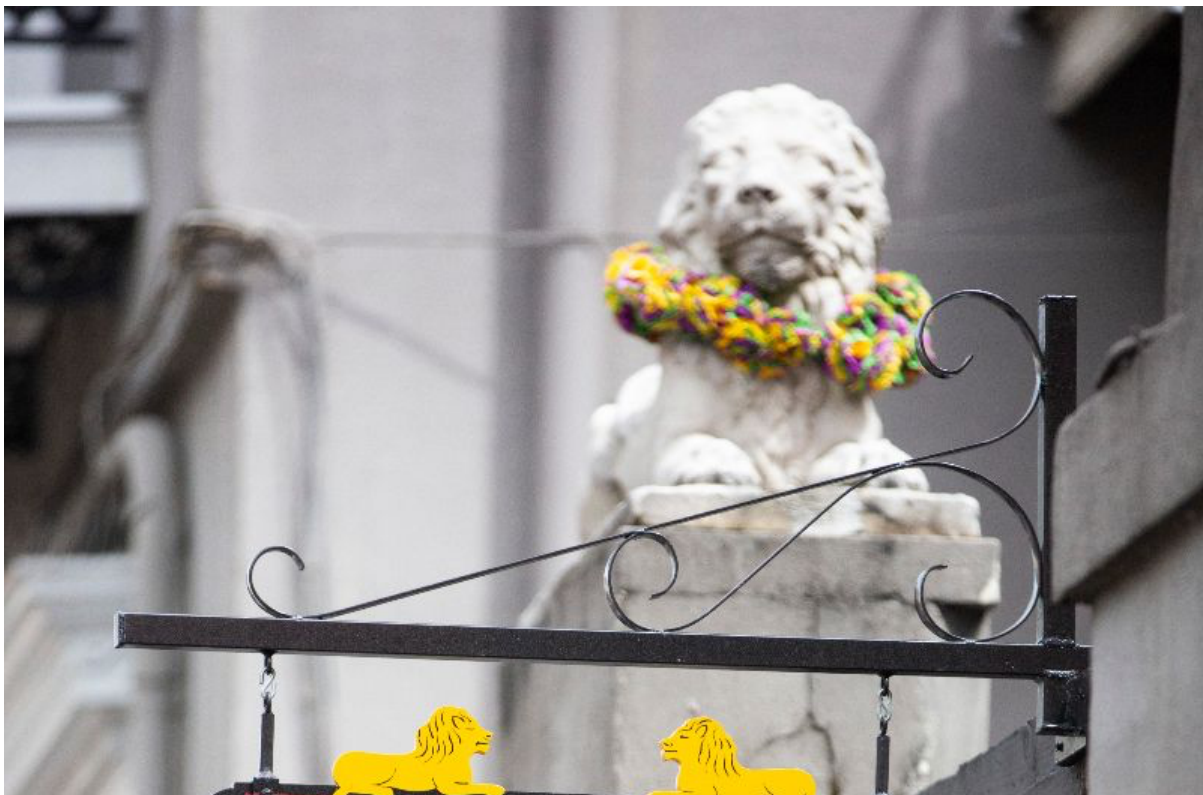
with musicians on a regular basis for the foreseeable future. Start looking for these oil on copper miniatures in the gallery by early November!

And remember, you are not limited to acquiring a Rhys portrait of someone else, in fact, we invite you to commission a portrait by Emilie of yourself, your spouse or partner, a family member...or a combination of family in one image. She is a specialist at capturing what she likes to call a "living likeness", a gift and a skill stemming from being the daughter and granddaughter of successful portraitists.

THIRD ANNIVERSARY PLANS !

Hard to believe it, but this November will be **THREE YEARS** since Scene By Rhys was opened!!! We are so excited to celebrate this milestone with any of you who can make it out to join us.

The music lineup will be Tuba Skinny on Friday November 8th, and the Leroy Jones Quintet on Saturday November 9th. Look for an invitation appearing soon in your inbox with details.





PERMANENT EXPANDED HOURS: Over at the gallery on Toulouse, come and see us anytime 10:00 am to 6:00 pm, Thursdays through Mondays, or if necessary, by appointment other times.

Photo by Sophie Germer, June 22nd 2019.

WWW.SCENEBYRHYS.COM

Don't forget to check out our [website](http://www.scenebyrhys.com) using your smartphone, tablet, laptop or desktop! Many new pen & ink drawings have been uploaded recently, including soon these from book 100...yes, that's right, Emilie has completed One Hundred Sketchbooks!





SKU# 10047: Delfeayo Marsalis, bandleader and trombone, June 18, 2019





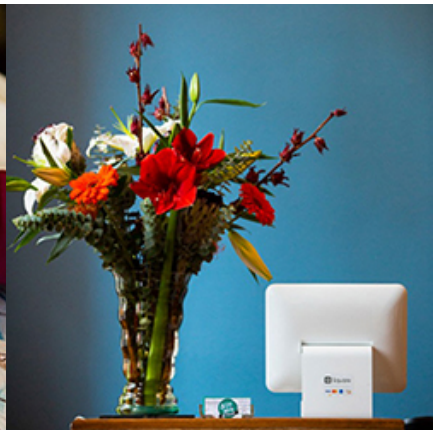
SKU #10083: Jason Stewart, Bass, July 9th, 2019





SKU #10065: Ashlin Parker, trumpet, July 7th, 2019

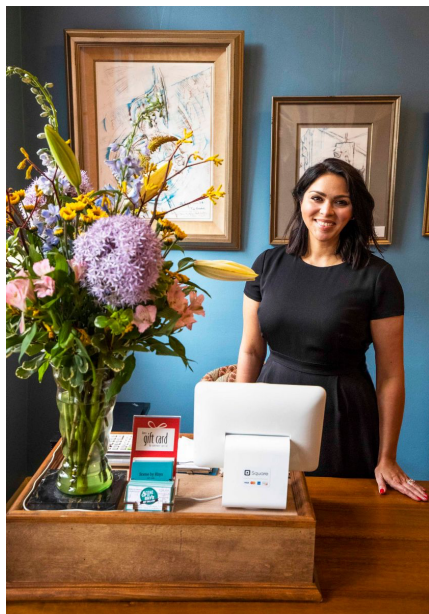
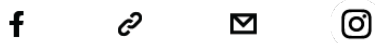




VISIT SITE

SHOP NOW

CONTACT US



Contact us anytime for information, to make comments about the work, or to inquire about commissions such as portraits or CD cover art. Have a look at the website, and please stop in at the art gallery located centrally in the beautiful and historic French Quarter in New Orleans, open Thursday through Monday, 10am-6pm.

Emilie Rhys

Artist / Owner

emilie@scenebyrhys.com

Courtney Smith, Gallery Director

courtney@scenebyrhys.com

Scene By Rhys Fine Art:

708 Toulouse (Courtyard Entrance)
just off Royal Street in the French Quarter
New Orleans • Louisiana 70130

Want to change how you receive these emails?

You can [update your preferences](#) or [unsubscribe from this list](#)

This email was sent to << [Test Email Address](#) >>

[why did I get this?](#) [unsubscribe from this list](#) [update subscription preferences](#)

Scene By Rhys Art Gallery · 708 Toulouse St. Courtyard · New Orleans, LA 70130 · USA

