

Major Announcement

[Campaign Preview](#)

[HTML Source](#)

[Plain-Text Email](#)

[Details](#)

2019 Gallery Happenings | Volume 4, Issue #2

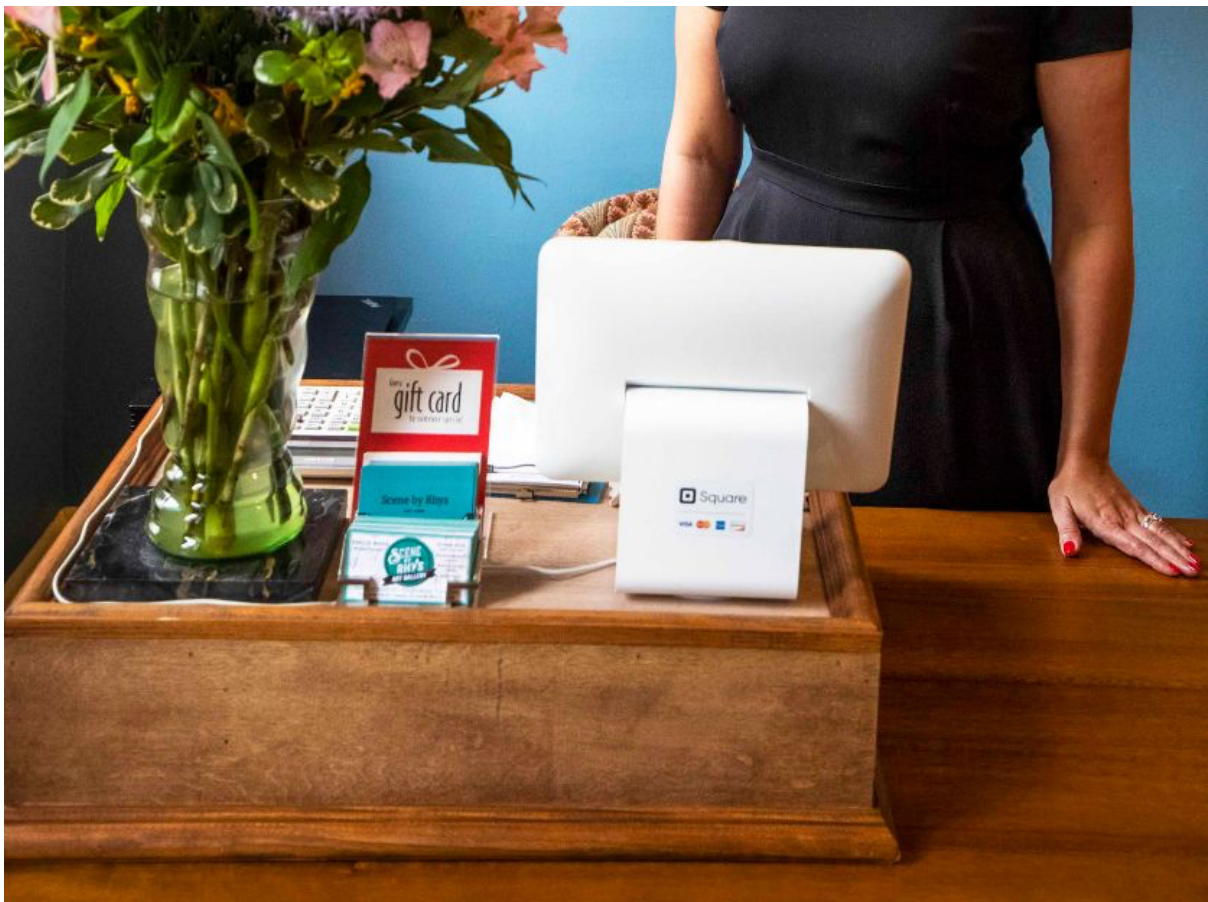
[View this email in your browser](#)



All of us at the gallery wish you a very happy Fourth of July, and thank you for your continued interest and support.

We are excited to introduce Courtney Smith at the helm of Scene by Rhys Fine Art...





...as Gallery Director. She is already lighting up the gallery and taking the reins of day to day operations on Toulouse. Her background in art and interior design brings another layer of talent to Scene by Rhys Fine Art.

Esther Rose, who has been with Scene by Rhys from the beginning of public-facing developments in 2015, is also an accomplished singer-songwriter. Check out her website at: www.estherrose.net/news.

Having stepped aside from the gallery to spend more time on her music career, Esther will continue to be an integral part of Scene by Rhys, coordinating with Courtney to produce special events at the gallery and assisting Emilie in the art studio on Orleans Avenue.

**We are expanding our team, we have expanded our gallery hours.
Come see us.**





Courtney, Emilie and Esther at Scene by Rhys Fine Art last week...

Meet Gallery Director Courtney Smith:

Hailing from the University of Florida, Smith earned her degree in Political Science, but recognized early on her artistic passions were taking a back seat. After working as a paralegal during the 2008 economic crash, her career took a turn when she met interior designer Daniel J. Moore who mentored and inspired her to follow her true passions.

“The analytical side of my brain was in overdrive, but the creative side of my mind was not being tended to – fashion, art, music, design was always a part of my life and my family,” Smith said. “Daniel put a lot of faith in me. He told me you have an eye, a good sense of what needs to be done. If I can do it, you can do it.”

Getting the job done no matter what is one of the many things that ties together the team at Scene by Rhys. Each a woman warrior, enjoying artistic successes in the vibrant atmosphere of New Orleans, all while being self-taught.

“I light up to see Emilie's interactions with Esther, there is so much talent and mutual admiration on this team,” said Smith. “I’m proud and honored to be a part of such an inspiring working environment.”



ANNOUNCING EXPANDED HOURS: starting July 1st, 2019 we will be open from 10:00 am to 6:00 pm, Thursdays through Mondays.

Photos by Sophie Germer, June 22nd, 2019.

WWW.SCENEBYRHYS.COM

Visit the [website](http://www.scenebyrhys.com) using your smartphone, tablet, laptop or desktop! Many new pen & ink drawings have been uploaded recently, including these of Detroit Brooks, Sheryl Cormier, Susanne Ortner, and Oscar Rossignoli:

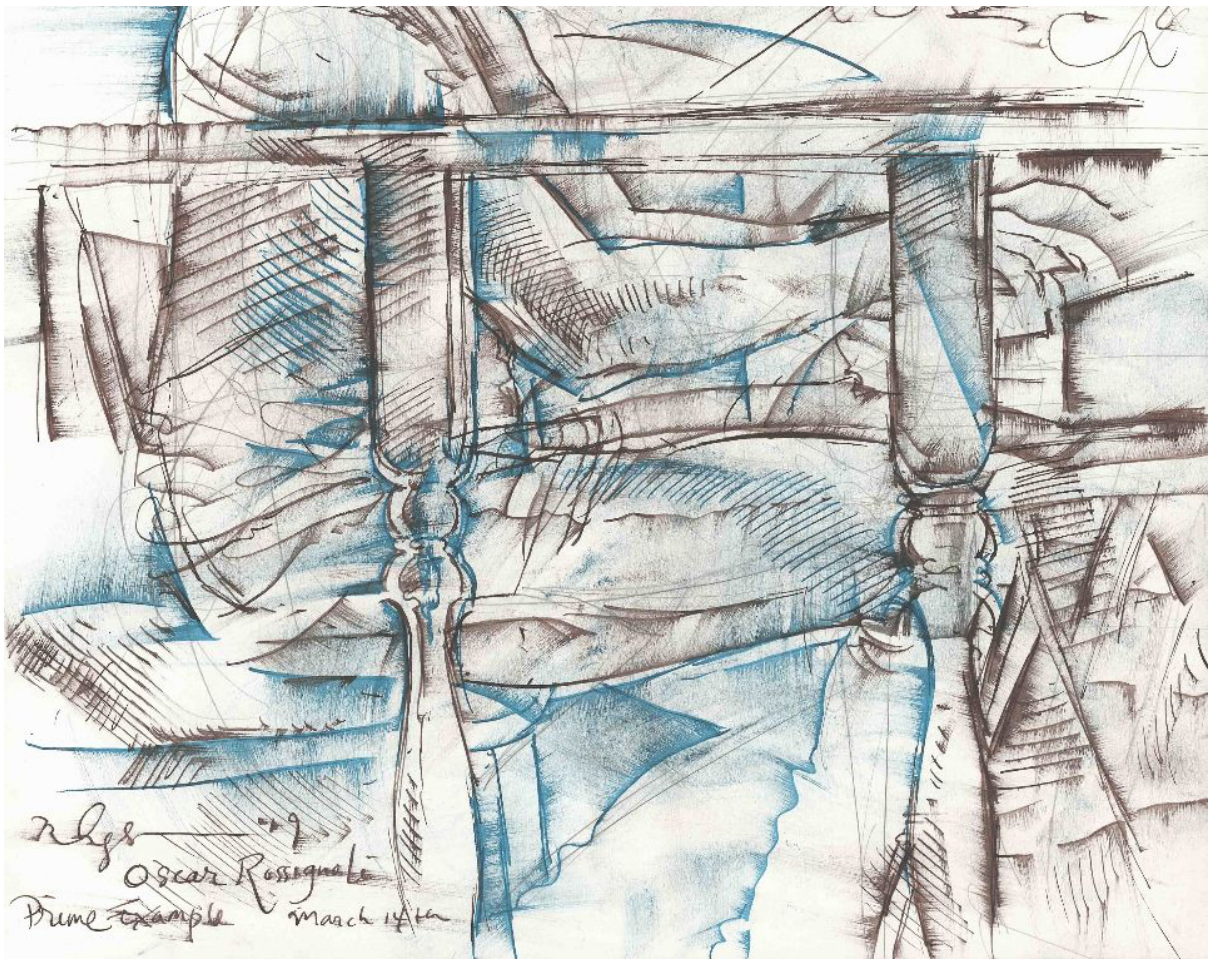


Rlys Detroit Brooks
Danny Barker East - 9 May 1979
January 10th



Rlys - '79
Susanne Ostner
Zaffereccano
January 1978





[VISIT SITE](#)



[SHOP NOW](#)



[CONTACT US](#)



SCENE BY RHYS

Contact us anytime for information, to make comments about the work. or to inquire about



commissions about the items, or to inquire about commissions such as portraits or CD cover art. Have a look at the website, and please stop in at the art gallery located centrally in the beautiful and historic French Quarter in New Orleans, open Thursday through Monday, 10am-6pm.

Emilie Rhys
Artist / Owner

emilie@scenebyrhys.com

Courtney Smith, Gallery Director

courtney@scenebyrhys.com

Copyright © 2019 EMILIE RHYS, All rights reserved.

Scene By Rhys Fine Art:

708 Toulouse (Courtyard Entrance)
just off Royal Street in the French Quarter
New Orleans • Louisiana 70130

Want to change how you receive these emails?

You can [update your preferences](#) **or** [unsubscribe from this list](#)

This email was sent to << [Test Email Address](#) >>

[why did I get this?](#) [unsubscribe from this list](#) [update subscription preferences](#)

Scene By Rhys Art Gallery · 708 Toulouse St. Courtyard · New Orleans, LA 70130 · USA

