

# Some Exciting News

[Campaign Preview](#)

[HTML Source](#)

[Plain-Text Email](#)

[Details](#)

2019 Gallery Happenings | Volume 4, Issue #1

[View this email in your browser](#)

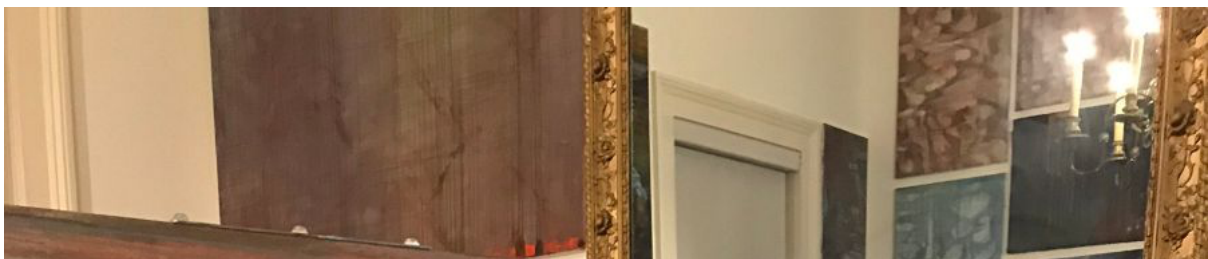


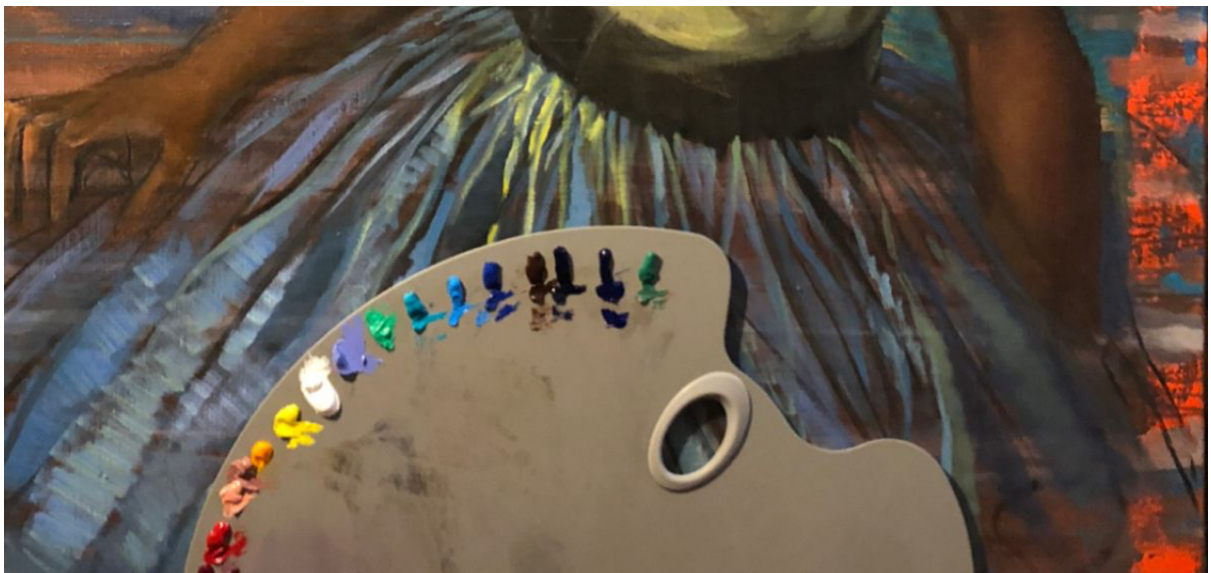
**All of us at the gallery wish you a very happy spring season, and thank you for your continued interest and support.**

## **Opening night in 2020 for the Rockmore & Rhys show at the N.O. Jazz Museum:**

The historic exhibit of music-themed canvases and drawings plus supporting ephemera -- the first ever public showing of this father/daughter pair-- is now slated to open in the second floor galleries at the **New Orleans Jazz Museum** on **Thursday January 30th, 2020**. *Mark your calendars now*, and stay tuned for updates.

Emilie is devoting much of her time now to studio sessions with musicians, working on oil canvases of them.











Singer/songwriter Quiana Lynell (winner of the 2017 Sarah Vaughan International Jazz Vocal Competition).

48" tall by 36" wide . Oil on Linen . 2019

Gregg Stafford, Bandleader, trumpeter/singer, a portrait started in 2014 and recently revisited.

30" tall by 36" wide . Oil on Linen . 2014-19





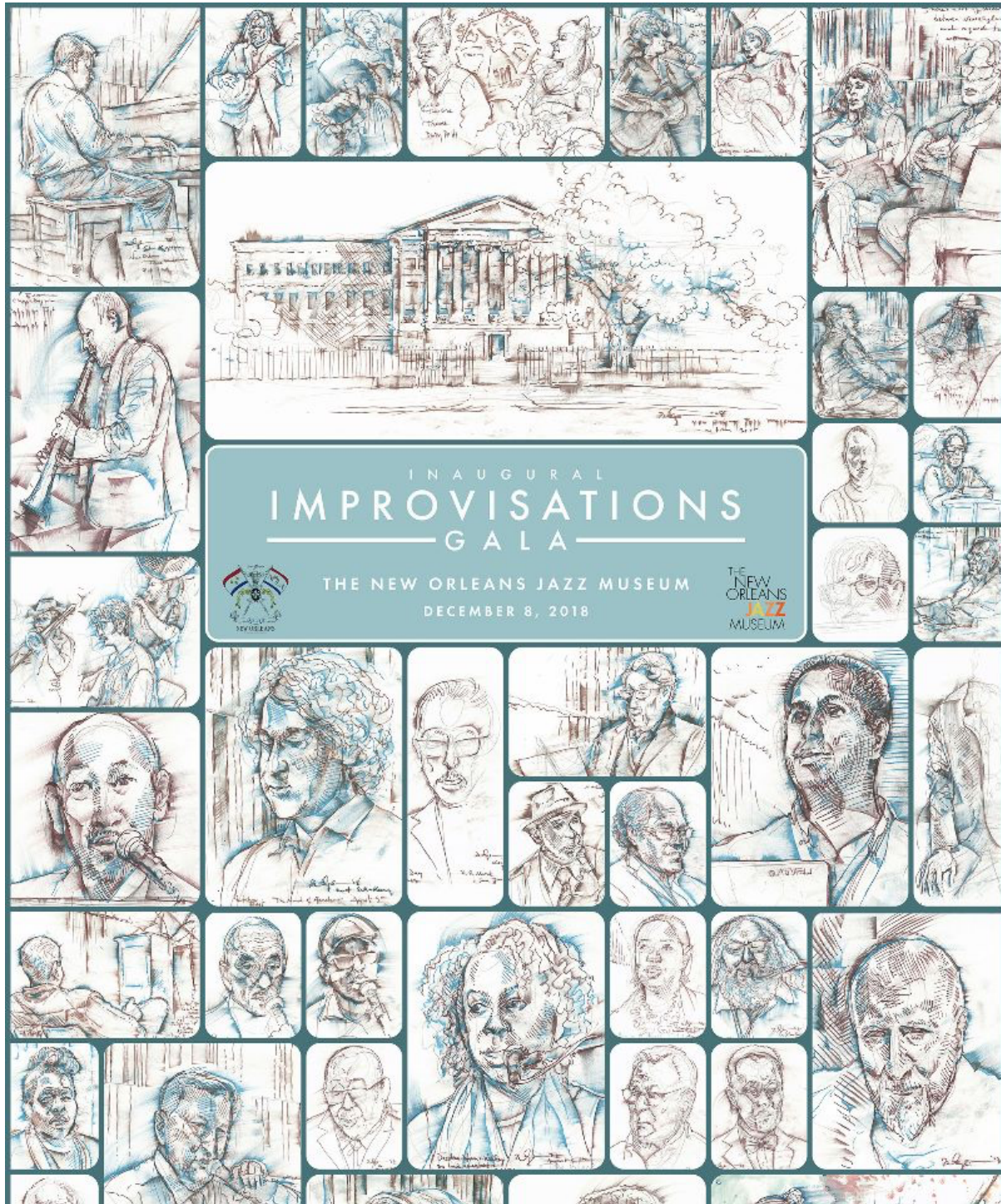


Jazz Museum Curator Emeritus Don Marquis (and author of the seminal *In Search of Buddy Bolden*), after a recent studio session for his portrait, started in 2014 and being revised now 40" tall by 30" wide Oil on Linen 2014-19

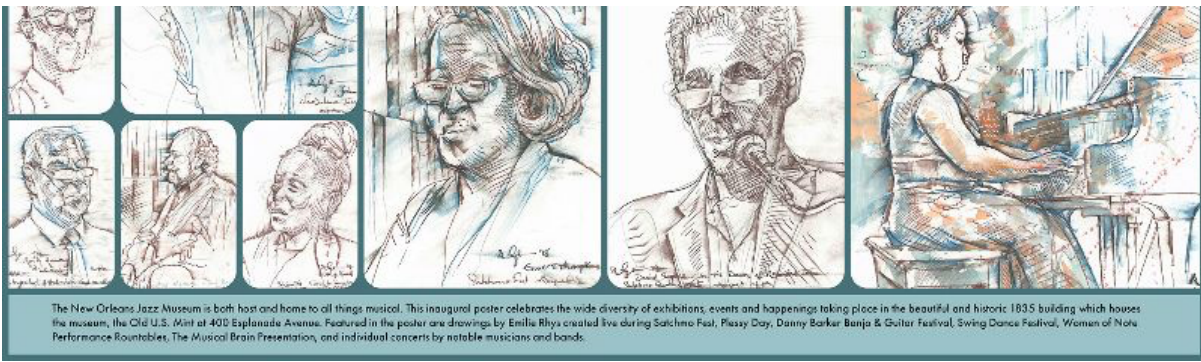


# Incredible time at the New Orleans Jazz Museum's *Improvisations* Inaugural GALA

...held at the Museum on Saturday December 8th. And the work of Emilie Rhys was utilized for numerous items to promote and celebrate the museum and its mission -- culminating in this 36" x 24" commemorative poster. It was sold at the event and will soon be available on the museum website.







The New Orleans Jazz Museum is both host and home to all things musical. This inaugural poster celebrates the wide diversity of exhibitions, events and happenings taking place in the beautiful and historic 1835 building which houses the museum, the Old U.S. Mint at 409 Esplanade Avenue. Featured in the poster are drawings by Emilie Rhys created live during Satchmo Fest, Plessy Day, Danny Barker Banjo & Guitar Festival, Swing Dance Festival, Women of Note Performance Rountables, The Musical Brain Presentation, and individual concerts by notable musicians and bands.

**Featured in the poster** are an assortment of live drawings Emilie created in the third-floor performance space of the museum during the past two years at events such as ***Satchmo SummerFest, Plessy Day, Women of Note, Danny Barker Fest,*** and ***Music & The Brain.*** The Jazz Museum's now permanent home in the Old U.S. Mint building is something to celebrate!



**Emilie Rhys at her drafting table** in the performance space of the museum where guests at the Gala on December 8th were able to observe her creating multiple drawings of Jon Batiste, Trombone Shorty, and the Trombone Shorty Academy.

Photo by Eric Waters

---

EXCITED TO UNVEIL OUR NEW GALLERY STREET SIGN -- it was hand-painted by Eve at Mystic Blue Signs on Magazine Street. We love



the way she included our beloved lions in her wood design!



**IN THE NEWS:**



Long hailed as an essential pocket guide, The French Quarterly covers cuisine, history and arts of the French Quarter. We are thrilled to share Ryan Tramonte's artist profile on Emilie and her work: <http://frenchquarterly.com/art/new-face-game>

---

## January 2019 at the Robert Lehman Art Center in North Haven, MA

***Music Inked Into Art***, one-month exhibition of large-format Rhys drawings. The Center is located on the grounds of the Brooks School, and Emilie was also invited to do a teaching residency entitled *Drawing The Music*. It was an intensive experience, and the kids said they learned a lot. Have a look here at the school's photo essay covering the show and the classes: <https://www.brooksschoolphotos.com/2018-2019/Winter-Term-2019/Drawing-the-Music/>



Rhys at the entrance to the Robert Lehman Art Center January 15, 2019. Photo by

the Center's Director Amy Graham, (also art teacher at the school).



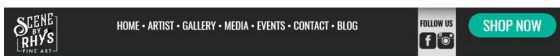
Artist Nancy Aleo (Professor and Chairperson of the Studio Foundation Department at MassArt) and musician Stan Strickland (Associate Professor, Berklee School of Music), in from Boston to perform original music at Brooks, sharing a laugh with Emilie while viewing the exhibition. Photo by Amy Graham.

Jennifer O'Neill, Brooks' Asst. Dir. Communications, observed Emilie with the students and sums it up: <https://www.brooksschool.org/about/about-brooks/school-news/news-detail/~post/drawing-the-music-students-learn-from-artist-who-inspired-their-winter-term>

---

---

**WWW.SCENEBYRHYS.COM**



Here's a screenshot of the online shop showing our new simplified landing page! Based on your





### THE SHOP ONLINE.

Scene By Rhys Fine Art, both online and on Toulouse Street, celebrates the music and musicians of New Orleans via the public display and sales of artwork showing one very unique view of the local music scene, that of Emilie Rhys, created live during musical performances.

And musicians benefit from not only from the visual homage in the artwork, but also from the direct sales commissions Ms. Rhys personally delivers to them.

Originals range in size from 5"x7" to 30"x40", and prints/posters range from 8"x10" to 36"x48". Most are available unframed, but in-house framing options can be viewed at the gallery and on the website at the "Framed Art" category. Shipping is available all across America.

- THE MUSICIANS
- THE BANDS
- THE VENUES
- FRAMED ART
- GIFT CARD / PORTRAIT COMMISSIONS

landing page! Based on your feedback, we've scaled down the offerings, both in choices and in actual number, to make for a streamlined viewing experience. Have a look, and if anything catches your fancy use code **ML20** to receive **20% off any purchase through April 15th 2019**. You may use the discount more than once during this time.

Any questions, contact us at 504-258-5842 or [emilie@scenebyrhys.com](mailto:emilie@scenebyrhys.com).



VISIT SITE

SHOP NOW

CONTACT US



Contact us anytime for information or to make comments about the work. Have a look at the website, and please stop in at the art gallery located centrally in the beautiful and historic French Quarter in New Orleans.

**Emilie Rhys**  
Artist / Owner

-----  
Esther Rose, Manager  
Casey Jane Reece-Kaigler, Assistant

---

*Copyright © 2019 EMILIE RHYS, All rights reserved.*

**Scene By Rhys Fine Art:**

708 Toulouse (Courtyard Entrance)  
just off Royal Street in the French Quarter  
New Orleans • Louisiana 70130

Want to change how you receive these emails?  
You can [update your preferences](#) or [unsubscribe from this list](#)

---

This email was sent to << Test Email Address >>  
[why did I get this?](#) [unsubscribe from this list](#) [update subscription preferences](#)  
Scene By Rhys Art Gallery · 708 Toulouse St. Courtyard · New Orleans, LA 70130 · USA

