

# Scene By Rhys Fall 2018 Newsletter

[Campaign Preview](#)

[HTML Source](#)

[Plain-Text Email](#)

[Details](#)

SCENE BY RHYS ART GALLERY | 2018 E-Newsletter Volume 3,  
Issue #2

[View this email in your browser](#)



## We're dreaming of cooler temps...

But of course, being in New Orleans, fat chance! However, it is just after the fall equinox, and soon even we will be treated to crisp air and lower humidity. With that, we will be spending a lot more time in our beautiful courtyard, hosting live music and art events.

## Gallery Announcement:

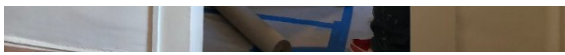
**Exciting times are ahead at the gallery. New signage is in the works, incorporating a radically different overall design. Both the street sign and the large banners at the entryway will be unveiled by the time of the gallery's 2nd anniversary mid-November. And we are developing a new series of activities involving musicians and art at the gallery.**

We are preparing for a complete overhaul of the physical gallery space at 708

Toulouse, Courtyard, fixing crumbling plaster on some walls and then painting all walls/trim beautiful new colors to better set off the artworks on display.

**NOTE: To give the workmen some room to work with we've removed all the art and small furniture and the gallery will be closed for two-to-three weeks starting Monday September 24th. A brief notice will be sent out when we know the re-opening date.**





**These stone lions which flank the courtyard entryway have observed many a passerby from their high perch. These photos were taken standing in the gallery doorway five steps up from the courtyard.**





**Later in October we will resume regular "Music + Art" afternoons in the courtyard, and in November we will celebrate our 2nd anniversary with a weekend of live music/art events:**

**Leroy Jones Quintet, Friday 11/9 from 7-10pm;  
Musicians (TBA), Saturday 11/10--afternoon;  
Tuba Skinny, Monday 11/12 from 7-9:00pm.**

Emilie will be stationed at her drafting table at all events, creating new 18"x24" images in pen & ink. Join us at these free events for Music + Art, light fare and a selection of beverages.

**These drawings were created by Emilie during such events this spring:**



George Aschmann & Greg Sherman, April 8th 2018. Size is 18"x24".



James Evans, Norbert Susemihl, George Aschmann & Greg Sherman during French Quarter Fest, April 15th 2018. Size is 18"x24".



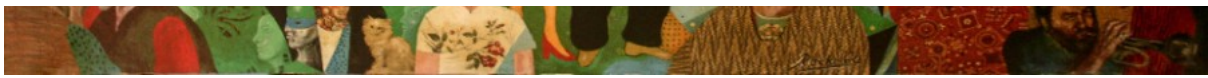


Tuba Skinny's Todd Burdick in performance with the band during the 1st year anniversary event at the gallery on November 12, 2017. Size is 24"x18".

## And a year from now, a "Duet" of sorts...

Yes, at the [New Orleans Jazz Museum](#), an exhibition of Emilie Rhys' current music-themed drawings and paintings will face off with those of her late father, the artist Noel Rockmore, painter (in 1976-77) of the canvas seen below (originally for the Maison Bourbon):





L-R: New Orleans Jazz Museum Music Curator David Kunian, artist Emilie Rhys, and museum volunteer Bonnie Cochran (photo credit Baylee Badawy). There's an intriguing story about the painting and Emilie, but you'll have to wait for the exhibition in 2019 to learn about it!

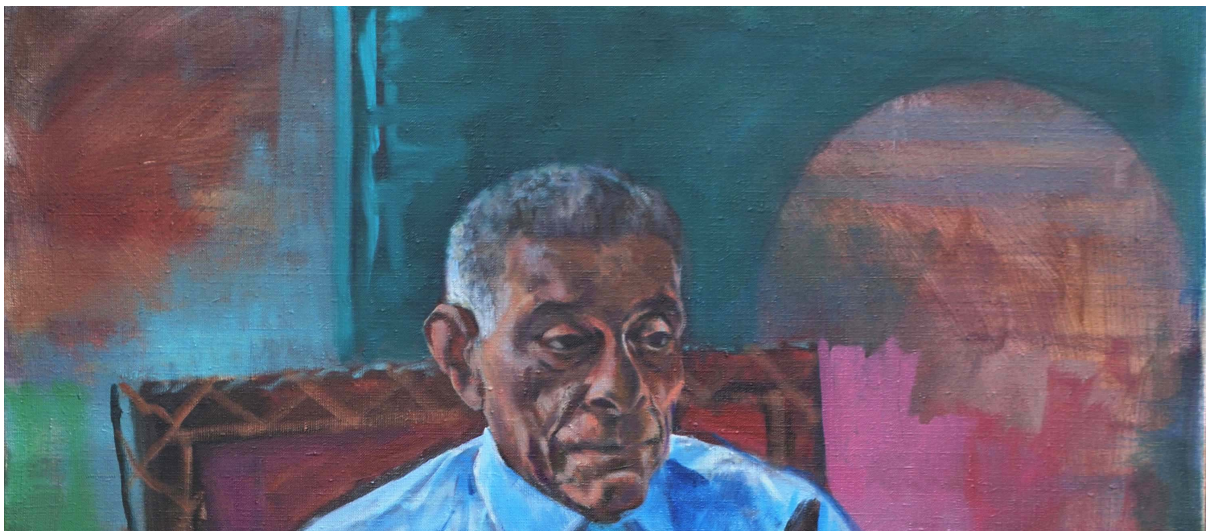
This photo was taken May 2017 at the New Orleans Jazz Museum (occupying most of the Old U.S. Mint building at 400 Esplanade Avenue) soon after the museum acquired the mural, which will be an important component in the joint Rockmore/Rhys exhibition planned for opening in the Fall of 2019, to be on display for a full year.

## New Orleans Jazz Museum Show

In the Fall of 2019, the museum will do something that has never happened in public before anywhere: It will put on display, side-by-side, the artwork of Noel Rockmore and his daughter Emilie Rhys. And a multi-generational component (in the form of some artwork by Noel's parents) will make an appearance here too.

There's one difference though, which is that Emilie's work is still literally "a work in progress" and thus throughout the next year we will be highlighting sessions of her live portrait series of jazz musicians, created mostly in her Orleans Avenue art studio, documenting the developments with both photography and video.

Below is one such canvas begun by Emilie in 2014 which will be finished in the next year, and many new ones will join it.





"Charlie Gabriel" by Emilie Rhys, an oil on linen, in-progress. 40"x30"

---

## IN THE NEWS

Emilie participated in an exhibition at Preservation Hall last November:







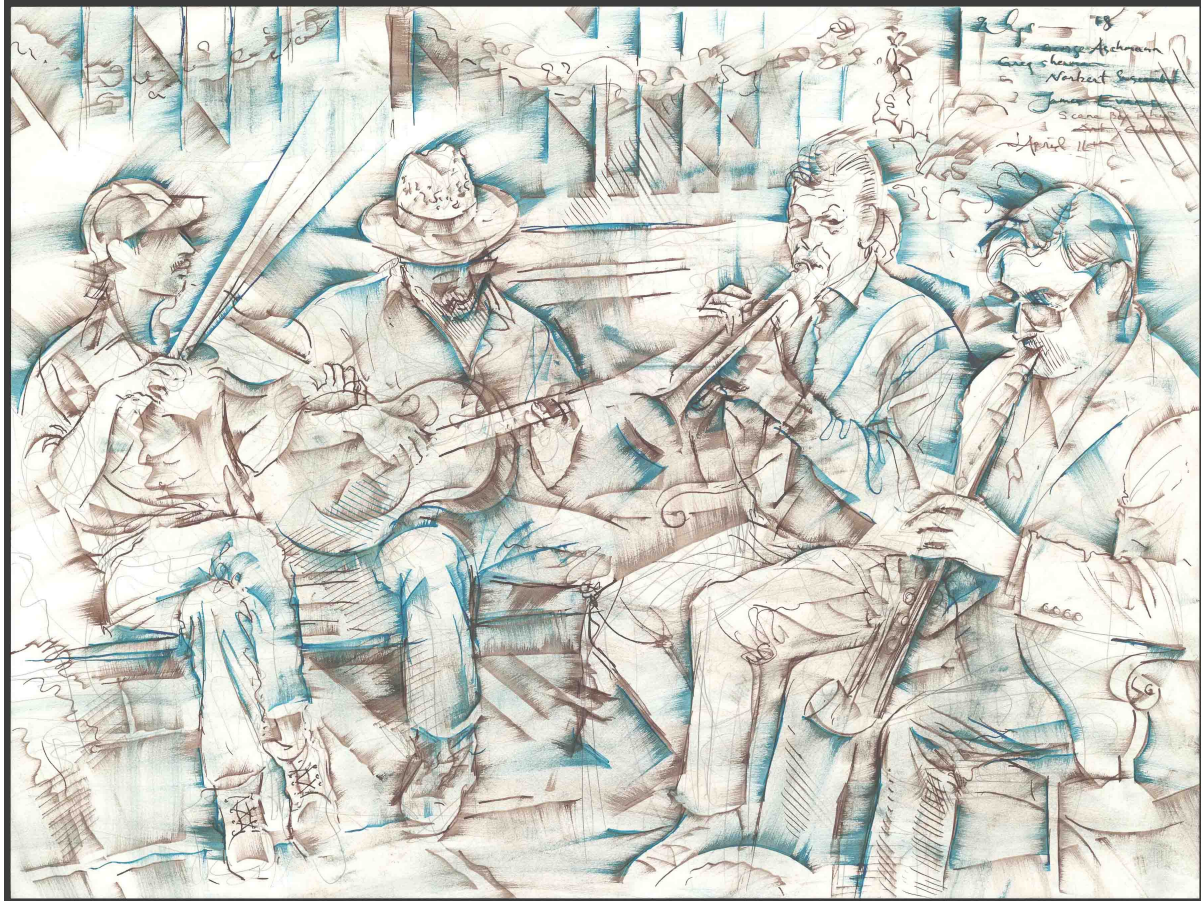
2017 photo of Emilie Rhys in her art studio on Orleans Avenue by the amazing Katie Sikora, creator of [The Sexism Project](#), an ongoing series of her photos and interviews with women in the New Orleans music industry. Emilie was honored to participate in this wide-ranging overview of a persistent issue. This photograph was displayed in the historic carriageway of Preservation Hall in the inaugural exhibition of Katie's photographs, which filled nearly every room.

### On April 11th 2018

The gallery courtyard was filled with the music of an impromptu quartet, put together for a promotional filming organized by the French Quarter Business Association for the NBC Universal Golf Channel. Scene By Rhys Art Gallery was chosen to lead off the mini-feature on what's going on in the French Quarter and what to do there when you visit.



Immediately following completion of the drawing seen below, Emilie was interviewed by Baily Mosier of NBC Universal Golf Channel, filming by Donny Goertz.



George Aschmann, Greg Sherman, Norbert Susemihl, and James Evans, April 11th 2018, during filming by NBC Universal Golf Channel. Drawing size is 18"x24".

---

Any questions, contact us at 504-258-5842 or [emilie@scenebyrhys.com](mailto:emilie@scenebyrhys.com).

We love the musicians of New Orleans and hope you do too! In homage to the inspiration of their music and image, a percentage of all sales (not including framing costs) is paid to the musicians depicted in each artwork created by Emilie Rhys -- whether originals or prints.

**SHOP NOW**

**VISIT SITE**

**CONTACT US**

Contact us anytime for information or to make comments about the work. Have a look at the website, and please stop in at the art gallery



please stop in at the art gallery  
located centrally in the beautiful and  
historic French Quarter in New  
Orleans.

**Emilie Rhys**

**Artist & Gallery Owner**

Esther Rose, Gallery Manager

Hannah Wycoff, Gallery Assistant

Windy Johnson, Gallery Assistant

Sofia Riggio, Gallery Intern



*Copyright © 2018 SCENE BY RHYS ART GALLERY, All Rights Reserved.*

**Scene By Rhys Art Gallery:**

708 Toulouse (Courtyard Entrance)  
just off Royal Street in the French Quarter  
New Orleans • Louisiana

Want to change how you receive these emails?

You can [update your preferences](#) or [unsubscribe from this list](#)

This email was sent to << Test Email Address >>

[why did I get this?](#) [unsubscribe from this list](#) [update subscription preferences](#)

Scene By Rhys Art Gallery · 708 Toulouse St. Courtyard · New Orleans, LA 70130 · USA



